

the Scoop Today

RE LAW OFFICES OF
**Rosenberg, Eisenberg
& Associates, LLC**

Personal Injury
Workers Compensation
Nursing Home Abuse & Neglect

**No Charge Unless
Recovery is Made**

815-947-3445 841 E. North Ave.
Hwy 20 East Stockton, IL
WWW.RICHARDROSENBERGLAW.COM

- Car Accidents
- Slip / Trip & Fall
- Medical Malpractice
- Wrongful Death
- Personal Injury
- Job Accidents
- Product Injuries

VOL. 85 • NO. 52

YOUR FREE HOMETOWN NEWSPAPER

WEDNESDAY, DEC. 25, 2019

Pearl City Holiday Invite

By Trenten Scheidegger
SPORTSWRITER

Last Week, Pearl City hosted their Holiday Invite. A Holiday tournament that hosts a multitude of local teams, among them being: Warren, River Ridge-Scales Mound, Le-na-Winslow, and Pearl City.

On Saturday, Dec. 14, the Wolves kicked off their play in the tournament with an impressive win over the Warren Warriors. Both the Wolves and Warriors have struggled thus far, with each of them having one regular season win coming into the game. The Wolves showed up hungry for a win, and they got just that as they defeated Warren 30-17. Warren would go on to lose their next two games against both Orangeville and East Dubuque.

River Ridge-Scales Mound struggled through the Holiday tournament, as well. After suffering tough losses to both Le-Win and Durand on the opening day, the Wildcats were set up to face off with a solid AFC team on Tuesday, December 17, where they lost 42-28.

With both Warren and River Ridge-Scales Mound going winless throughout the tournament, they were set to face each other as the bottom teams coming out of each of their pools. The game would give one of these teams the opportunity to

walk away from this tournament with a win.

It turned out to be a nail-biter of a game as things were tight from start to finish. Thanks to an impressive opening quarter from Sydni Sigafus, Warren was able to take a slim, two-point advantage into the second quarter as they led 8-6. The second quarter featured a lack of scoring from both teams as they went into halftime tied at ten all.

River Ridge-Scales Mound found their rhythm in the second half, however. Mickayla Bass provided some momentum with five points in the third quarter. Sidney Driscoll added another four points in the quarter. With a seventeen point third quarter, the Wildcats found themselves with their first lead of the game as they went into the final quarter. Driscoll added another six points in the final quarter to bring her total points to ten, all of which came in the second half.

Warren was able to cut into the Wildcat lead late, but it wasn't enough as the Wildcats went on to win 36-32. Driscoll and Bass led the team in scoring as they combined for nineteen, Driscoll with ten and Bass had nine. Claire Wienen was a close third as she finished her day with eight points.



HALEY BRUDI PHOTO The Scoop Today

Stockton FFA

Stockton FFA members Haley Brudi, Joseph Brudi, Cody Breuer and Katie Barch participated in the State FFA Meat Judging contest on Dec. 14, in Champaign, Illinois. The team placed 8th out of 33. Individually, Haley placed 4th, Joseph placed 31st, Cody placed 62nd, and Katie placed 67th. There were over 200 competitors. The team is coached by Bob Hawley, Brandon Lessman and Trish Krug.

Jo Daviess County Christmas Bird Count results

Terrence Ingram, compiler for the Jo Daviess County Christmas Bird Count has released this year's count results. This National Audubon Society's Christmas Bird Count was completed on Dec. 17 by members of the Eagle Nature Foundation and the Jo Daviess Conservation Foundation with six teams of volunteers. They attempted to count all of the birds within a 15 mile diameter circle that was centered at Schapville. After the count the volunteers enjoyed a potluck luncheon at the home of Grace Storch, who had organized the teams. Mr. Ingram has been compiler for this annual count ever since he first started it with one other person

in 1966.

This year the teams recorded 2,325 individual birds of 39 different species. Of these, 12 species were recorded by only one team. Not a single bird of many common species was sighted; they were: ringed necked pheasants, turkeys, great blue herons, collared doves, great horned owl, red headed woodpecker, pileated woodpecker, horned lark, snow bunting, song sparrow, and purple finch. Many counts recorded various species of blackbirds in the past, but not a single one was seen this year.

See **RESULTS**, Page 12

Stockton Community Christmas Dinner

The churches of Stockton will hold their annual Community Christmas Dinner on Wednesday, Dec. 25th at Noon at Christ Lutheran Church on Main Street just south of Rt. 20. The Dinner is especially for those who are alone on Christmas Day. Please sign up at your local church or call Elaine Schlichting at 815-947-3795. Reservations are not required. For a delivery in the Stockton area, please call Elaine or the church on Christmas Day, 815-947-2033. Please indicate if you need a ride.



Ashlie L. Stoddard
Financial Advisor

304 E. North Avenue
Suite #200
Stockton, IL 61085
815-947-6090

Need directions to your financial destination?

Member SIPC
www.edwardjones.com

Edward Jones
MAKING SENSE OF INVESTING



TONY CARTON PHOTOS The Scoop Today/Shopper's Guide

Fun in the winter sun

Many River Ridge pre-school chorus members not only sang, but also danced through their merry segment of the evening's entertainment.



Members of the River Ridge kindergarten classes use props to bring their Christmas songs to life.



The River Ridge fifth grade band opens the school's winter recital with "Good King Wenceslas."

(Right) The River Ridge first grade charms the standing room only crowd with their rendition of "Jolly Old St. Nicholas."



Thank You

Thank you Lena Lions Club and Lena Area Church Cooperative for the plate of cookies and fruit we received. This brightened our day.
Judith Otte & Arlene Loewe

364396

Gianna Willson says:
"Happy Christmas/ New Year!"

Lena - 3 - 4 bedroom remodeled home. 26 x 80 steel out building with heat and concrete floor. 240 3-phase, 240 single-phase & 200 amp electric on all .75 acres! \$149,500

Julie Willson 815-690-2792
julie@bussianrealtors.com
www.bussianrealtors.com

BUSSIAN REALTORS

Lena 815-369-4747
Freeport 815-235-6106

364351

Liles Chiropractic Clinic, Ltd.
Dr. Jim Liles & Dr. Jared Liles
BCBS provider

LENA:
M-F 8:30 a.m. - 5:30 p.m.
Saturday by Appointment.
238 W. Main St.
815-369-4974

WARREN:
Friday
8:30 a.m. - 5:30 p.m.
102 Catlin St.
815-745-2294

Now providing
KLASER USA
Therapy

Standard Process
SUPPLEMENTS

321148

Special thanks to our local Lena Lions for the fruit baskets. Also to the local church women who furnish the cookies for the platter. All was enjoyed by the residents at Doll Apartments.



TONY CARTON PHOTOS *The Scoop Today/Shopper's Guide*

Fun in the winter sun

Members of the River Ridge second grade brought down the house with a rousing version of "Rocking Around the Christmas Tree."



The River Ridge third grade proves their futures to be so bright they had to wear shades!



The River Ridge fourth grade reminds us the Grinch is a mean one.



The River Ridge fifth grade closes the evening with the reminder, "Here comes Santa Claus."

Serving Stephenson County for 134 years

The Salvation Army is most noticeably the longest serving non-profit organization in Stephenson County, changing several times to meet the current economic and human needs. Each year the organization hosts a necessary fund raiser known as the Red Kettle Campaign. This year the need was made clear and again they changed the delivery of their services to best fit the community, sometimes isn't easy however it is often necessary to elevate duplication of services and over spending. The local unit has made several changes this year to continue to serve well into the future and needs the increase to help launch many new self-sustaining programs.

for. It has been very noticeable that an unmanned kettle location bears little to no financial contributions. Monies collected in their respected counties helps to fund ongoing needs in that county.

"We are at a critical junction of this year's campaign" Captain Jim Brickson, "Dec. 24th is the last day the red kettles will be out for collections".

"We are asking our community members to volunteer or make financial contributions to support your local Salvation Army's Christmas campaign. You can be part of providing for many programs and services" Cal Wescott, Advisory Board Chair

The Freeport Salvation Army hosts 10 Red Kettle locations in Stephenson County, one in Jo Daviess County and two in Ogle County and represents a total of just over 2,500 hours; 264 hours aren't yet spoken

Currently the Freeport Salvation Army is running short about \$50,000 necessary to meet the budgeted amount necessary to operate the local unit. Financial support can be as easy as signing up on RegisterToRing.

See **SERVING**, Page 4



The gift they'll never outgrow

Toys and games soon become garage sale items. But the benefits from life insurance can last for years. Let us put our experience and financial strength to work for you. Talk to your COUNTRY Financial representative about life insurance for a child.



Deb Brown
Lena
815-369-2881
deb.brown@countryfinancial.com



Life insurance policies issued by COUNTRY Life Insurance Company and COUNTRY Investors Life Insurance Company, Bloomington, IL

0919-162

363120

The Shopper's Guide & Scoop Today office will be closed for the holidays on December 24, 25, 31, and January 1. As always you may reach us via email at scoopshopper@rvpublishing.com or by voicemail at 815-369-7112 or Fax 815-369-9063.

Happy Holidays!

6.68363



AUTO | HOME | LIFE | BUSINESS | RETIREMENT

Do you know how valuable you are?

We do.

Your family knows too. If something happened to you, would they be able to stay in their house, keep up with bills, and would your kids have money for college? Protect the ones you love by insuring their most valuable asset - you! Give me a call today.



Steve Rothschadl
Financial Representative
Lena, IL 61048
(815)369-4581

Auto, home and business insurance policies issued by COUNTRY Mutual Insurance Company, COUNTRY Preferred Insurance Company and COUNTRY Casualty Insurance Company. Life insurance policies issued by COUNTRY Life Insurance Company and COUNTRY Investors Life Assurance Company, Bloomington, IL.

0415-565HC-03015-9/24/2019

357431

your source for on-line news: **RVPNEWS.COM**

Obituary

WALTER SCHAEFER

Walter Christian Schaefer, 90 years old, passed away peacefully on the early morning of Dec. 17, 2019.

He was born on Oct. 30, 1929 to German immigrants

Christian and Marie Katherine (Randecker) Schaefer in Lennox, Iowa. He graduated from Stockton High School in the spring of 1947. He was a long time member of Christ Lutheran Church in Stockton, Illinois. He also enjoyed attending church at St. John's Lutheran in Pearl City, Illinois where he made many friends.

He married Barbara Guy on July 23, 1953 at Christ Lutheran Church and they started their family. He was employed at National Lock as a Die maker from 1947 to 1950 until he



was called home to help with the family farm due to the death of his father. Walter started his agricultural business in 1956 and continued in the agricultural business until 1985. During this time he was employed at Atwood Automotive for three decades. After this he ventured into the carwash and storage shed business with his friend James Hass and S & H Enterprises was formed. This business continued until he sold out in 2014.

Walter enjoyed giving of himself to his family and to the community. He was an EMT for the Stockton community for several years. He was involved with Mission America thru Christ Lutheran Church which assisted with the rebuild of the Gulf coast after hurricane Katrina. Walter also worked with the Red Cross of Northwestern Illinois for several years.

Walter is survived by his Son in Law Don Blomberg of Freeport, Illinois, daughters Susan (Steven) Heller of Stockton, Illinois, Sandra Schaefer of Pecatonica, Illinois and Laura (Harley) Melbye of Oconomowoc, Wisconsin. He is survived by 20 grandchildren, 12 great grandchildren, and 1 great great grandchild. He was preceded in death by his parents, two sisters, one brother, his wife Barbara and his daughter Kathleen.

Services were held at Christ Lutheran Church on Saturday Dec. 21, 2019 with a graveside service at Ladies Union Cemetery in Stockton, Illinois to immediately follow the service.

A memorial fund has been established. Condolences can be shared with Walter's family at www.hermannfuneralhome.com.

Births

Owen Redmond Heck

Josephine & Daniel Heck of Pearl City, IL are pleased to announce the birth of their son Owen Redmond Heck born on Dec. 18, 2019 at FHN Memorial Hospital in Freeport, IL. Grandparents are Midge Hernandez, Rick Hernandez both of Freeport, IL, Susan Bielefeld of Hixton, WI and Harelde Heck of Neillsville, WI. Great Grandparents are Wayne Oldham of Neillsville, WI and Harold Heck of Greenwood, WI. Owen joins a sister Bridget and brothers Ryan & Aiden at home.

Eryah Faithe Webb

Grace Brinkmeier & Jerold Webb are pleased to announce the birth of their daughter Eryah Faithe Webb born on Dec. 15, 2019 at FHN Memorial Hospital in Freeport, IL. Grandparents are Tina Taylor of Freeport, IL, Jeffery Brinkmeier of Stockton, IL, Brandy Webb of Boscobel, WI, and John Webb of Orangeville, IL. Great Grandparents are Virginia Brinkmeier of Chadwick, IL and Betty Taylor of Freeport, IL.

• Serving

(Continued from page 3)

com sending a check to 106 W Exchange St Freeport or using iPay or Google Pay at all Red Kettle Stands. The Salvation Army is asking that the local residents consider even giving just two hours to ring the bell at any of the available locations. Just two volunteer hours can allow the Salvation Army to provide meals for a family for an entire week.

Dispensary do's and don'ts

By Matthew Mongelia
POTGUIDE-COLORADO COLUMNIST

Next week, countless people will step into an Illinois dispensary for the first time. Cannabis tourism is booming, and each election cycle new states are opening up for recreational and medical sales. Purchasing cannabis has never been safer, easier or more convenient. For shoppers old and new alike, we've compiled a simple guide of "Dos and Don'ts" to having an optimal dispensary experience, straight from the other side of the counter.

No matter your experience level with cannabis, everyone should be aware of the proper etiquette for visiting a dispensary. Following the guidelines below will help ensure your experience is nothing but smooth.

Do Come Prepared

Just like a club or a bar, entry has stipulations. If you're shopping recreationally, make sure that you have valid, acceptable ID on hand. Call ahead if you're unsure. If you're shopping medically, make sure your paperwork is up to date and accurate.

If it's your first time shopping at a medical dispensary, there will usually be some onboarding paperwork to be done. Plan extra time accordingly. Also, some (most) dispensaries only take cash, so hit the ATM beforehand if needed.

Do Some Planning

Think a little bit about what you might be looking for, or what you might be open to, before shopping. Most dispensaries have their menu online, and taking some time to familiarize yourself with the products will keep you from feeling overwhelmed, especially for those new to the dispensary experience.

Online Menus

Checking out a dispensary's menu before visiting will save you time and help you find the ideal product for your needs.

If you know what you want and you're not feeling flexible, call ahead and make sure it's in stock. Inventory moves fast, and that great deal on live resin is going to be as exciting to everyone else as it is to you.

Don't be a Potency Snob

Walking in the dispensary and asking for the highest potency is akin to walking into a liquor store and asking for Everclear. You don't look classy. THC content is just one of the many factors that produces the qualities of a high. Feel free to mention if you're seeking something potent, but don't simply assume that numbers are everything. Trust in your budtender. If you're just looking to get deeply stoned, they will provide the best way possible.

Do Ask Questions

Budtenders are there to help. Wheth-

er you've been smoking since the 70's or started lighting up when recreational came along, the weed world changes fast. Whatever you think you might know may have changed, and there's a lot to know, so don't be shy. Feel free to make inquiries, even "stupid" ones. It will really help your budtender help you.

Don't be Rude (or accept rudeness)

The public perception is often that budtenders are dismissive, perma-stoned and half-aware. If that is indeed your dispensary experience, we encourage you to seek another shop. In reality, your budtender should courteously carry in-depth product knowledge on an average of 50 rotating items (sometimes many more) alongside a mountain of laws and regulations. It's a lot to remember, and understanding should be encouraged on both sides. Rudeness can be a quick ticket to bad suggestions and worse service.

Do Make Yourself Comfortable

We turn to Puff Daddy's timeless advice for arriving on the scene, "act like you been here before." It can be unusual and exciting to buy cannabis at a counter, legally, from a vast selection. Still, make some attempt to be cool about it. Look around; tell the budtender a little about what kind of experience you're looking to have or other smoking preferences. The more comfortable and open you are, the better your resulting experience will be.

Don't Go Beyond Your Limits

Budtenders truly want their customers to have an enjoyable experience. If you're cautioned away from something as being too strong, you should probably heed the advice. Cannabis works on its own unique, independent chemical system in the body. Thus, people often base their tolerance assumptions on incorrect factors. Budtenders have experience, and want you to have a good time. Listen to them if you're unsure about dosing!

Don't Talk About Plans for Illicit Activity

While most customers are pleasant, law-abiding people, there's at least a few every single day that walk directly up to a budtender and ask advice on how to circumvent state or federal guidelines, openly, on camera.

No Illegal Talk

Talking about breaking the law in a dispensary is a bad idea, plain and simple!

Every single dispensary in every state is under continual surveillance. It's part of the regulatory guidelines. So, next time you think about nonchalantly asking for help committing a felony, please pause and reconsider before speaking up, and forcing the budtender to intervene. They can and will refuse a sale; it's part of the job.

And it really ruins their day, so just don't.

Do Tip

Seriously, it's standard. A good guide is \$1-\$2 for small purchases, \$5 for bigger buys, and don't be shy to give more if they really went all out. What exactly is good service? In general, it means being attentive, efficient and offering helpful advice when asked.

Tip Jar

Tipping your budtender is always a good idea, especially if they provided good service.

If you looked at six different products and wanted to know the effects of each, you certainly should be tipping. However, a good cannabis purchasing experience is also based on what you want it to be. Want the budtender to be fast and quiet? Communicate that. If they gave the service you wanted, show your appreciation in the tip jar.

Don't Linger

Most dispensaries are not set up in a way to take large volumes of people at once as a security feature. Unfortunately, strict regulation adherence takes priority over customer experience. Budtenders have to be hyper vigilant on the clock, but won't let it show.

If you're done with your purchase, it's a big help to them if you're on your way in a timely manner. Budtenders enjoy shooting the breeze as much as any other person under regular circumstances, but in the dispensary, it can be stressful.

Happy Shopping!

There you have it, some simple guidelines to be aware of the next time you decide to visit a dispensary. Remember, budtenders are there to help so keeping in mind these simple dos and don'ts will help improve both of your experiences. Finally, if you ever have a particularly pleasant dispensary experience and want to commend your budtender, be sure to leave the dispensary a review to show some love!

Al-Anon schedule changes

The Al-Anon meeting at St. John's Lutheran Church, 229 S. First St. Pearl City that regularly meets on Tuesdays at 6:30 p.m. meet at 6 p.m. for their 12/31 meeting. Questions: 815-990-2611 or www.niaf.org

The NA meeting at Trinity Lutheran Church 312 S. High Street, Lanark that regularly meets on Wednesdays at 6:30 will not meet on Dec. 25. The next meeting will be at 6:30 on Jan. 1, 2020.

This is an OPEN MEETING/Enter using west door on Prairie Street. Questions: 815-297-7653 or www.na.org

B & J CONSTRUCTION
• Log Homes • New Homes • Remodeling
Fully Insured • FREE Estimates
BRUCE MARCURE
815-947-2709
JABA Jo Daviess Area Builders Trade Assoc. 61192

MOWERY AUTO PARTS
USED AUTO PARTS
FOR MOST MAKES AND MODELS
LOCATING SERVICE AVAILABLE
Also buying junk cars & trucks
Hours: M-F 8 a.m. - 5 p.m. • Sat. 8 a.m. - Noon
815-599-0480
686 Van Buren, Freeport, IL
www.moweryauto.com
278053

Premier Chiropractic
Discover Your Potential
Call our office today to set up a FREE consultation with Dr. Mike Wampfler
815-947-3320
212383

FROM LENA'S KITCHEN



The not so skinny cook

We seem to be on a seesaw of weather. The middle of the week it was cold, cold, and more cold. Now we are climbing up to above freezing and may break into the forties. What a warm Christmas. Christmas Eve services will find it nice to come out of the church and not be freezing. This week's recipes are still a little Christmas and some after Christmas ideas too.

The first recipe is for a holiday salsa. The cranberries give it a different salsa flavor. Remember if you want it hot and then more hot, leave the seeds in the pepper. Enjoy this salsa with crackers or tortilla chips.

Holiday Salsa

1 pkg. (12 oz.) fresh or frozen cranberries
 1 C. sugar
 6 green onions, chopped
 ½ C. fresh cilantro leaves, chopped
 1 jalapeno pepper, seeded and finely chopped
 1 pkg. (8 oz.) cream cheese
 Pulse cranberries and sugar in a food processor until coarsely chopped. Stir together with onions, cilantro and jalapeno. Cover and refrigerate several hours or overnight. To serve, place cream cheese on a serving plate. Drain salsa; spoon over cream cheese. Serve with crackers or tortilla chips.

If you are looking for a different way to make broccoli that is not very difficult, try this crunchy and cheesy broccoli recipe.

Cheesy Crumb Topped Broccoli

1 pkg. (16 oz.) frozen broccoli florets
 1/3 C. toasted panko bread crumbs
 1/3 C. shredded extra sharp cheddar cheese
 ½ t. salt
 1/8 t. pepper
 ¼ t. garlic powder
 Prepare broccoli according to package directions; drain. In a bowl combine panko bread crumbs, shredded cheddar cheese, salt, pepper, and

garlic powder. Sprinkle over cooked broccoli.

If broccoli isn't your thing, try these great carrots. If you have your own carrots, use them instead of the frozen ones. The rosemary and thyme will help a rather bland vegetable jump up and down.

Rosemary and Thyme Carrots

2 C. frozen sliced carrots
 1/3 C. softened butter
 ½ t. fresh thyme, minced
 ½ t. minced fresh rosemary
 1/8 t. salt

Prepare carrots according to pkg. directions. Combine butter, thyme, rosemary and salt. Drain carrots; top with herb butter.

This salad is a pretty addition to any meal. It is light and refreshing, and will go into the New Year really well.

Red and Green Fruit Salad

3 kiwis, peeled, halved and sliced
 1 C. red seedless grapes
 1 C. green seedless grapes
 1 pkg. fresh raspberries (6 oz.)
 1 Bartlett pear, cored, sliced, and chopped.

1 red skinned pear, cored, sliced and chopped

Zest of one lime

Whisk:

2 T. fresh lime juice

1 T. honey

1 T. pomegranate molasses

Combine fruit and zest in a bowl. Whisk together lime juice, honey and pomegranate molasses until combined with fruit

This recipe is an easy way to use any beef leftover from Christmas. It is quick, and will be a great week night meal that just needs a salad and some bread.

Roast Beef Pasta Skillet

1 C. uncooked spiral pasta
 ½ C. chopped onion
 1 t. olive oil
 1 t. butter

1 C. Cubed cooked roast beef
 1 t. pepper
 ½ C. chopped tomato
 ½ C. grated Parmesan cheese

Cook pasta according to package directions. Meanwhile, in a skillet sauté onion in oil and butter until tender. Add roast beef and pepper; heat through. Drain pasta; add to beef. Stir in tomato and cheese.

If you are tired of ham and beef, this easy chicken recipe will be a welcome change. Chicken Divan is not usually in the form of a casserole, but this one would be a good one to try.

Easy Chicken Divan

2 pkg. (10 oz. each frozen broccoli
 2 C. turkey or chicken
 2 cans cream of chicken soup
 1 C. mayonnaise
 1 T. lemon juice
 ½ t. curry powder
 ½ C. soft bread crumbs
 1 T. melted butter
 ½ C. shredded cheddar cheese

Cook broccoli until tender. Place in greased casserole. Put meat on top. Combine soup and mayo, lemon juice, curry powder; pour over chicken. Sprinkle with cheese. Combine crumbs and butter and sprinkle over all. Bake at 350 for 25 to 30 minutes.

If you need a really good bar that is more like a candy, try these. The foil sling is an easy way to get the bars out of the pan. What is better tasting than caramel, pecans, and chocolate?

Turtle Bars

Crust
 1 2/3 C. flour
 ½ C. sugar
 1/3 C. unsweetened cocoa powder
 ¼ t. salt
 12 T. unsalted butter, melted
 Topping
 1 can caramel ice cream topping
 1 C. packed light brown sugar
 ½ C. heavy cream
 ½ C. light corn syrup
 8 T. unsalted butter
 ½ t. salt

2 C. chopped pecans, toasted, divided

1 C. semisweet chocolate chips
 ½ t. flake sea salt

Preheat oven 350. Make foil sling for 9 by 13 pan by folding 2 long sheets of aluminum foil; first sheet should be 13 inches wide and second sheet should be 9 inches wide. Lay sheets of foil in perpendicular to each other, with extra foil hanging over edges of pan. Push foil into corners and up sides of pan. Spray foil with cooking spray.

Crust: Combine flour, sugar, cocoa, and salt in bowl. Add melted butter and stir with rubber spatula until evenly moistened. Crumble dough over bottom of prepared pan. Press dough to even thickness using bottom of dry measuring cup. Using fork, poke dough all over, about 20 times. Bake until crust is fragrant and looks dry, 18 to 20 minutes. Transfer pan to wire rack. Crust needn't cool completely before adding topping.

Topping: Combine caramel, sugar, cream, corn syrup, butter, and salt in large heavy-bottomed saucepan.

Bring to boil over medium heat, 7 to 9 minutes, stirring frequently with rubber spatula. Once boiling, continue to cook, stirring frequently to prevent scorching, until mixture registers between 235 and 240 in several places; Cook 9 to 11 minutes longer. Mixture will be thick and bubbling vigorously. Off heat, stir in 1½ C. pecans. Pour caramel mixture over crust and spread to even thickness. Sprinkle with chocolate chips and let stand until chocolate chips have softened, about 5 minute. Swirl softened chocolate chips through caramel mixture using a butter knife. Sprinkle with remaining ½ cup of pecans and flaked sea salt. Let bars sit at room temperature until chocolate is set, at least 3 hours. Using foil overhang, lift bars out of pan (Caramel may stick to the foil. Use paring knife to separate, if necessary.) Cut into 24 pieces (5 cuts by 3 cuts) and serve.

The name of this recipe is decept-

See KITCHEN, Page 10



Season's

Greetings

WE WOULD LIKE TO WISH ALL
 OUR FRIENDS AND FAMILIES THE
 HAPPIEST OF HOLIDAYS AND A
 WONDERFUL NEW YEAR.

Leamon Funeral Homes

Lena Orangeville Warren Winslow

815-369-4512

L Leamon's Ambulance Service
 815-369-4512
 Lena, IL 61048
 24 Hour Emergency & Non Emergency Transfers

Tips for Handling a 911 Emergency

- #1 Is your house number visible and large enough to read from the street?
- #2 Turn porch light on.
- #3 Have someone watch for Ambulance arrival



280044

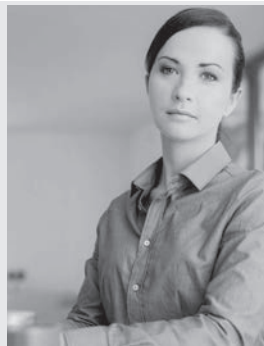


Chris Folmar
 Financial Advisor
 640 W. South St, #4
 Freeport, IL 61032
 815-616-5955

If You Aren't at Your Last Job ... Why Is Your 401(k)?

At Edward Jones, we can explain options for your 401(k), including leaving the money in your former employer's plan, moving it to your new employer's plan, rolling it over to an Individual Retirement Account (IRA) or cashing out the account subject to tax consequences.

To learn more, call today.



363274

Edward Jones
 MAKING SENSE OF INVESTING
 www.edwardjones.com
 Member SIPC

After Christmas Sales

Around the Northern Hills with Jo Daviess County Farm Bureau Manager Annette Eggers

Happy Holidays from all of us at the Jo Daviess County Farm Bureau! I hope you and your families have a wonderful Christmas and New Year! As a reminder, our office will be closed on December 24-25 and December 31 and January 1st to celebrate the holidays.

I'm excited to announce that the Jo Daviess County Farm Bureau just received a nutrient management grant from Illinois Farm Bureau. Our project, one of fourteen across the state of Illinois, is focusing on the use of cover crops and the benefits of doing so. I look forward to giving you more information on the field days that we will have once the growing season is underway. Stay

tuned....

Now that the Christmas season is here, it's a good time to shop for yourself. Your Farm Bureau membership could help with this. How about taking advantage of the Farm Bureau discount with John Deere? Farm Bureau members are eligible for the following discounts:



Annette Eggers

- \$350-\$3200 off commercial mowing
- \$100-\$250 off residential mowing
- \$200-\$350 off utility vehicles
- \$200-\$350 off tractors
- \$500-\$3700 off golf and sports turf

For more information go to www.jodavinesscfb.com and link on state benefits.

Christmas break is the perfect time for college students to apply

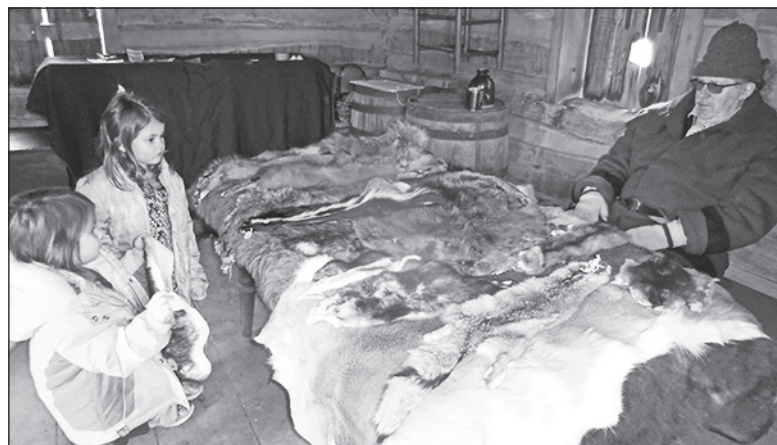
your source for on-line news:
RVPNEWS.COM

for scholarships through the IAA Foundation. This year, the IAA Foundation offers 76 awards ranging from \$1,000 to \$7,500 and totals \$118,000 in awards. Applicants may apply for more than one, but can only receive one scholarship. For the full details, go the IAA Foundation website. The application period runs from December 1, 2019 through February 1, 2020. The past two years Jo Daviess County has had a winner, so I encourage everyone to apply!

Farm Fun Fact: Cheddar cheese was first invented in the town of Cheddar Gorge, England, more than 400 years ago.

Intro to Apple Tree Pruning: the older and neglected

University of Illinois Extension Local Foods and Small Farms Educator Grant McCarty will teach Intro to Apple Tree Pruning: The Older and Neglected on Wednesday, Jan. 22, 2020. The class will be held twice that day, 10 a.m. to Noon and again from 6 to 8 p.m. in room 210 of the Highland Community College Student Conference Center (Building H), 2998 W Pearl City Road, Freeport (use parking lot A). Registration cost for this



TONY CARTON PHOTO The Scoop Today

Christmas at the Fort

Two young trappers bring their furs to sell to the fur trader at the Elizabeth Fort.

program is \$5 and pre-registration is required by Monday, Jan. 20. To register or for more information on this program, visit us online at go.illinois.edu/jsw or call us at 815-235-4125.

You may have inherited property that has a number of mature apple trees. You may also have ignored and neglected your apple trees for a number of years. Whichever category you fall into, it is not too late to get your trees on the path to-

wards productive yields.

This course will go into the decisions you need to make when it comes to getting mature apple trees back into shape over the next couple of years. Topics to be covered include when to let go of trees, basics of seasonal/older pruning, disease/insect management, choices of tools, making the first cuts of a multi-year process, and working through visual examples of trees that have been neglected.

Torkelson Cheese Co.
9453 W. Louisa Rd.
Lena, IL 61048



VISIT OUR CHEESE STORE!!

- 42 Different Varieties of Cheese
- Holiday Gift Boxes
- Cheese Trays for Any Occasion

Please call 815-369-4265 to Place Your Order or Visit Our Store
Store Hours:
M-F 8-3;
Sat 8-1

Sugarbakers
Boutique & Wine Bar

Merry Christmas and Happy New Year

Everything in the Boutique 40% OFF!

Check out our New Location!

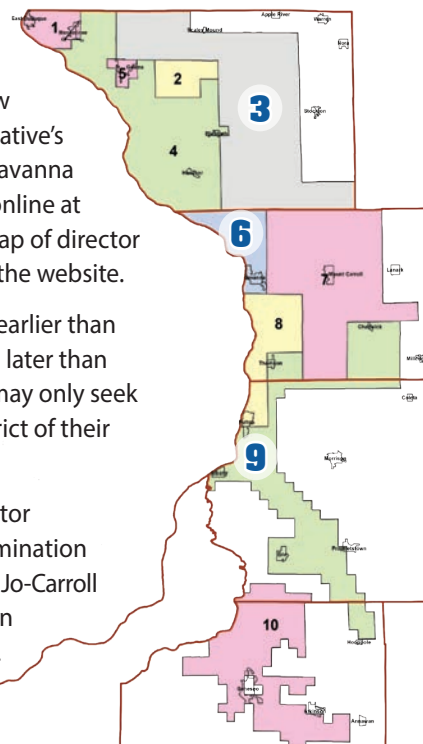
141 W. Railroad St. • Lena
815-369-9990

Jo-Carroll Energy seeks board of director nominations for districts 3, 6 and 9

Nomination petitions for the Jo-Carroll Energy Board of Directors are now available from the cooperative's Elizabeth headquarters, Savanna office, Geneseo office or online at jocarroll.com. A larger map of director districts can be found on the website.

Petitions may be filed no earlier than **January 13, 2020** and no later than **April 9, 2020**. Members may only seek nomination from the district of their primary residence.

Complete details on director qualifications and the nomination procedure can be found in Jo-Carroll Energy's bylaws, posted on the cooperative's website.



Jo-Carroll Energy

Your Touchstone Energy® Cooperative

800-858-5522 | jocarroll.com



COURTESY PHOTO *The Scoop Today*

Dr. Ameen Taleb conducts a recent training session.

Monroe Clinic Residency Program receives educational grant

Monroe Clinic Residency Program has received a \$63,000 grant from the Wisconsin Rural Physician Residency Assistance Program (WRPRAP) for the development of a critical care curriculum for residents and fellows. The grant will aid in supporting faculty training, curriculum development, and education training resources for procedural training.

Due to lower critical care volumes, residents and fellows have less access to both patients and procedures due to the rural nature of our area. This project will address the gap by providing them with enhanced skills and competencies to meet the needs of caring for rural patients.

With funds from the grant, Monroe Clinic Medical Education is purchasing educational resources that allow for improved learning experiences. The new TraumaMan, CentralLineMan and AirwayMan training systems will help staff “obtain a greater understanding of pathology and treatment,” explained Dr. Eli Burks, a Monroe Clinic hospitalist involved in the creation of the new curriculum. “This will result in quicker evidence-based decision making with lower stress and reduced mortality rates.”

The curriculum features topics such as shock, acute kidney injuries, respiratory distress, trauma, strokes, chest pain, and specialty intensive care units. “These topics will make our future providers capable of caring for critically ill patients in the emergency room and hospital setting, improve quality of

care and prepare our fellows for their board examination in emergency medicine,” said Dr. Ameen Taleb, Monroe Clinic Emergency Care physician, who also helped create the curriculum. Each month, a 4-hour training session digs deeper into one of the topics with a critical care lecture, workshop for the specific procedures and simulation of critical care and trauma cases.

“Our hope is that Monroe Clinic will become a leader in rural hospitals providing critical care training and this grant will help us reach that goal,” shared Lori Rodefelf, Coach of Medical Education at Monroe Clinic.

To learn more about Monroe Clinic’s Residency and Fellowship programs, visit www.monroeclinic.org/medicalresidency.

THE SCOOP TODAY

“Committed to the communities we serve”

EDITOR: Tony Carton

Advertising Sales:

Cyndee Stiefel: lenaads@rvpublishing.com

Office Manager: Laurie Tanley

To Contact The Scoop Today:

Telephone: 815-947-3353 • **Fax:** 815-369-9093

Email: News/Letters to the Editor: scoopshopper@rvpublishing.com

Ads: ads@rvpublishing.com

Classifieds: scoopshopper@rvpublishing.com

Billing Office: businessoffice@rvpublishing.com

Available online at: rvpnews.com

Mailing Address:

The Scoop Today

213 S. Center, Lena, IL 61048

TO SUBSCRIBE:

- Yearly subscriptions to The Scoop Today are available at \$25 annually for Jo Daviess & Stephenson Counties and \$39.95 annually for those out of the area. Subscriptions are non-refundable. Within our circulation area, The Scoop Today is free. You can pick up single copies of The Scoop Today at convenient locations throughout the area.

- **CLASSIFIED RATES:** Classifieds start at \$6.50 for the first 3 lines, then add \$1.50 per each additional line thereafter, for private party ads. Please call for complete rate information.

©2015 Rock Valley Publishing, LLC • All rights reserved

223513

YOU CAN'T BE EVERYWHERE



Teach your teen ways to say “no” to underage drinking

www.samhsa.gov



Our Kids = Our Future

Funded in whole or part by the Illinois Department of Human Services.

What do we really know about poverty?

By Craig Chamberlain
U OF I NEWS SOCIAL SCIENCES EDITOR

The holidays are a time we focus on those in need and heap scorn on the Scrooges and Mr. Potters who don't. But how well do we understand poverty otherwise – such as who's poor, where they live, and the help that is or isn't available? Are we operating, in some cases, from old or faulty assumptions? U. of I. sociology professor Brian Dill teaches an introductory course on poverty, in both classroom and online versions, and spoke with News Bureau social sciences editor Craig Chamberlain.

What do you find to be the biggest misconceptions about who is poor?

I hear three misunderstandings from my students. First, they overestimate the number of people around the world in extreme poverty. They often assume that more than one-third of humanity is living below the international poverty line of \$1.90 per day. While this was the case in 1990, it has declined rapidly over the past three decades to just under 10%.

This is still unacceptably high. But it is important to understand that efforts to alleviate poverty are having an impact. Much of the progress can be attributed to the mobilization behind eight Millennium Development Goals that were the focus of the global community from 2000-15. This effort helped to cut the extreme poverty rate in half, increase the number of children attending schools, reduce infant and maternal mortality, and improve access to

clean water.

The second misconception is about where the American poor are located. Poverty in the U.S. has long been associated with large urban centers such as Chicago's South Side or rural communities such as Appalachia, where it historically has been most concentrated. While poverty rates continue to be higher than average in those places, it's the suburbs that have, over the past two decades, become home to the largest number of poor residents.

A third misconception concerns poverty and work. Students often assume that, almost by definition, the poor are unemployed. It's correct that a majority of those below the poverty level do not work. But this includes children, the elderly and the disabled poor. And about 7 million of our fellow citizens – 5% of the active labor force – can be classified as the "working poor."

How do assumptions about welfare in the U.S. meet with the reality? What help is actually available, and for whom?

Recent polls show that the American public is generally sympathetic to the poor and supportive of greater government efforts to fight poverty. Most think that the poor are hard working and their circumstances are due more to forces beyond their control, rather than a lack of effort. Views shift, however, when survey questions refer to "welfare" rather than "poverty." A majority believe the government spends too little on the poor, but half say it's spending

too much on welfare.

"Welfare" can refer to a variety of public assistance programs, and surveys do not provide much clarity about how the public feels about specific programs. I suspect that our views have been shaped by the forceful critiques of the welfare system by Presidents Reagan and Clinton, both of whom emphasized the perceived excesses of cash assistance.

The law Clinton signed in 1996 replaced the previous cash assistance program with Temporary Aid to Needy Families, which added work requirements, caps for how long and how much aid a person could receive, and harsher punishments for recipients who did not comply with the requirements. As a result, the number of recipients of cash assistance shrunk dramatically over the two decades after – from 68% to 23% of families below the poverty line, according to the non-partisan Center on Budget and Policy Priorities.

Broadly speaking, public assistance in the U.S. is oriented toward those who work. Arguably one of the most successful anti-poverty programs is the Earned Income Tax Credit, which supplements the earnings of low- and moderate-income working people. The link between work and public assistance can also be seen in the Trump administration's recent announcement that it intends to tighten work requirements for the federal food stamp program, known by the acronym SNAP.

Overall, childless adults aged 18-49 without disabilities receive limited public assistance. And evidence suggests that low-income workers without children are the only group that is pushed deeper into poverty by the federal tax system, largely because they are eligible for only a very small EITC.

Is there any kind of common understanding about the nature of poverty that bridges partisan divides or suggests approaches we haven't tried?

There is no simple way to explain the existence and persistence of poverty. There are multiple, overlapping causes that vary by context and over time. Those debating the causes of poverty in the U.S. have tended to advocate on behalf of either an individualist or structuralist perspective, and it is important to stress that people's views have often been shaped by their political values rather than

empirical evidence.

Proponents of the individualist perspective explain poverty mainly as resulting from personal weaknesses, failings and inadequacies – such as making bad choices, failing to contain desires or neglecting to plan for the future. Those taking a structuralist perspective argue that poverty is caused by a shortage of decent-paying jobs, inadequate safety nets, discrimination and the distribution of power and resources beyond any individual's control.

One approach that has gained considerable attention over the past two decades is grounded in an understanding of both the structural impediments confronting poor people and their individual capacities to change their circumstances. It involves giving money directly to the poor through cash-transfer programs. Support for transfers stems from the understanding that low and variable income is central to the reproduction of poverty. Providing poor households with modest-but-regular income can help to smooth consumption and sustain spending on food, health care and education when times are tough, and

protects the poor from the need to sell assets and take on debt.

Your students are a diverse mix from both the U.S. and abroad. What are the challenges or insights that result from teaching a course on global poverty?

Although my students come from diverse backgrounds, the vast majority have had little, if any, direct experience with poverty, particularly the extreme poverty that is encountered in developing countries. A key challenge is helping them to move beyond the single story that we often tell about poverty, a story that focuses on the individual and identifies poverty with those who are different from us.

In the U.S., for example, poverty is often viewed as a problem that affects minorities and the so-called underclass. Evidence suggests, however, that more than half of the American population will experience at least one year in their lifetimes below the official poverty line. It is important therefore to understand that poverty is not a quality of a certain type of person but rather a condition that will be experienced by a majority.

Good Shepherd Lutheran Church

Good Shepherd Lutheran Church will gather on Dec. 29, for Blue Christmas worship service at 9:30 a.m. at 118 E. Mason St. Lena, IL. Not all Christmas are cheerful and merry. We have also experienced loss and grief this season. In Blue Christmas worship service we will read the massacre of the infants from Gospel of Matthew. Rene' Johnson will deliver the message. During worship we will bless the First Responders in our community. Everyone is welcome. Following worship, there will be a time for fellowship with coffee and sweets. If you have any questions call the church at 815-369-5552.

Salem United Church of Christ (Lena)

Worship will begin at 10:30 a.m. on Sunday, Dec. 29, at Salem United Church of Christ, 8491 W. Salem Road, Lena. The sermon entitled "In the Public Domain" will be from Hebrews 2:10-18, given by Rev. Randal Nicholas. There will be no Sunday School on Dec. 29. The Wednesday Morning Breakfast Group will not meet on Jan. 1.

St. John's Lutheran Church (Pearl City)

You're welcome to celebrate Christmas at St. John's. Join us for Christmas Eve worship services at 5 or 9 p.m. The Christmas Day worship service will be held at 9 a.m. The Five Gifts of Christmas Worship Service will be at 9 a.m. on Sunday, Dec. 29.

Beth Leid, Freeport, won the \$200 Calendar Raffle drawing on Dec. 15, 2019.

Bible Studies will resume on Jan. 6. All are welcome to play Mexican Train Dominoes on Jan. 7 at 9 a.m. The Men's Breakfast will meet at 7:30 a.m. on Wednesday, Jan. 8 at Brother's Inn, Lanark.

Need a place to hold an event in Pearl City? The main hall at St. John's is available for rent. Call the church for more information and availability.

St. John's Lutheran Church is at 229 S. First Street, Pearl City, Illinois. The office phone number is 815-443-2215 (mornings). All are invited to our weekly worship services and youth to our Sunday School and youth ministries. You may also email at prshadmin@gmail.com.

Willow United Methodist Church

The Willow United Methodist Church will have their Christmas Eve Candle Light Service on Tuesday Dec. 24, at 5 p.m. as we look forward to celebrating the birth of Jesus. And we wish everyone a Very Merry Christmas!

We will also have our Sunday Service on Dec. 29; at 9 a.m. Pastor Chuck Wolbers will be bringing the message. All are invited and welcome to stay for fellowship after the message followed by Sunday School at 10:30. We are concluding an exciting study on Angels by Billy Graham. All are invited and welcome to this time too.

Willow UMC is located seven miles SE of Stockton, IL on Willow RD.

For more information, please call Pastor Chuck at 815-947-2541



Dream Big in 2020.

Set your goals high and your sights higher. We will be with you every step of the way. Have a safe, happy, and prosperous New Year!

PEKIN
INSURANCE
Beyond the expected®

Marvin Uecker Agency
Dan Harnish
308 East Lena Street
Lena, IL 61048
815-369-4569

AUTO • HOME • LIFE • BUSINESS



363567

EVANGELICAL FREE CHURCH OF LENA

720 N. Freedom Street
Lena, IL • 815-369-5591

Dr. Jim Erb, Senior Pastor
Rev. Scott Wilson
Assoc. Pastor of Youth

Sunday Worship 10:00 a.m.
Sunday School/ABF 8:45 a.m.
AWANA-Wednesdays 5:30 p.m.
Youth Group Wednesdays
Jr. High - 5:30 - 7:00 p.m.
Sr. High - 7:00 - 8:30 p.m.

Listen to pastor's weekly sermon
at www.lenafreechurch.org

337676



The Scoop Today and Shopper's Guide join these local businesses in wishing you a safe and

Happy New Year! 2020



**YOU CAN HAND
OVER YOUR KEYS
OR YOUR LIFE.**



**MAKE THE
CHOICE**

DON'T DRINK-N-DRIVE!



LENA STATE BANK
MEMBER FORESIGHT FINANCIAL
335501

**BREWSTER
CHEESE COMPANY**
230234

Deb Brown
COUNTRY FINANCIAL
0819-079 364199

**BRANDON'S
HARDWARE RENTAL
& LUMBER**
267981

SULLIVANS FOODS
229650

**SCHULTZ
APPLIANCE**
230178

Pro Source
Electric and Automation Inc.
335633

**THE SHOPPER'S
GUIDE**
99594

**STOCKTON
TRAVEL CENTER**
230225

**STOCKTON POLICE
DEPARTMENT**
146071

**Buss Boyz
Customs**
268076

**BOCKER AUTO
GROUP**
335635

**Staterline Insurance
Services Inc.**
146241

**HOMETOWN
TROPHIES**
GIFTS & ENGRAVING
335502

**NAPA STOCKTON
AUTO
SUPPLY**
145959

**THE
SCOOP TODAY**
99596

**STOCK HOLDERS
SALOON**
99909

**STATE BANK
OF PEARL CITY**
268073

**SCALES MOUND
SINCLAIR
SERVICE INC.**
99900

**STOCKTON
DENTAL CENTER**
99907

**WERHANE
ENTERPRISES, LTD.**
99639

**KLEIN'S
auto service**
antiques to late models... 230180

HARTZELL'S IGA
99583

THE IRON HORSE
99603

**B&B HILLSIDE
REPAIR**
303315

**Leverton
Sales & Service**
Est. 1987 - McConnell, IL 303841

**THE Apple River
STATE BANK**
268075

**LENA POLICE
DEPARTMENT**
99602

THE BAUER GROUP, LTD.
**Auto-Owners
INSURANCE**
LIFE • HOME • CAR • BUSINESS 364267

**COUNTRY
FINANCIAL**
STEVE ROTHSCHADL
0719-167 364200

**RADERS
INSURANCE
AGENCY**
www.radersinsurance.com 364323

**OFFENHEISER-
SCHWARZ
FUNERAL HOME**
335631

**VINCENT, ROTH,
TOEPFER &
LEINEN, P.C.**
99657

**LEAMON'S
AMBULANCE
SERVICE**
99906

**STAGECOACH
TRAIL STORAGE**
189910

**LENA FIRE
DEPARTMENT**
99659

**VILLAGE OF
WARREN
AND
WARREN POLICE
DEPARTMENT**
230177

•Kitchen (Continued from page 5)

ive. You are probably thinking pasta and red food coloring. If you read further, you will see that there is cake involved for the red. There is pistachio pudding involved for the green. You have red and green M & M's to top off the "lasagna."

Red Velvet Dessert Lasagna

1 pkg. red velvet cake mix
 1/3 C. oil
 2 eggs
 2 pkg. (8 oz. each) cream cheese, softened
 1/2 C. sugar
 2 3/4 C. cold milk, divided
 1 tub (12 oz.) Cool Whip, thawed, divided
 2 pkg. (3.4 oz each) Jell-O Pistachio instant pudding
 1 1/2 C. miniature marshmallows
 1/2 C. red and green M & M's chopped
 Preheat oven to 350. Beat first 3 ingredients in a large bowl with mix-

er until blended; press onto bottom of 9 x 13 baking dish sprayed with cooking spray. Bake 12 minutes. Cool completely. Beat cream cheese and sugar in second large bowl with mixer until blended. Add a cup of milk; mix well. Gently stir in 2 cups Cool Whip. Spread evenly over the crust. Whisk dry pudding mixes and remaining milk in medium bowl 2 minutes. Stir in 1 cup of the remaining Cool Whip; spread over cream cheese mixture. Refrigerate for at least 4 hours. Cover with remaining Cool Whip, then top with candies and marshmallows right before serving. Cut into squares.

We will soon be saying goodbye to another year. It is hard to believe how fast we went from Thanksgiving to Christmas. We had a little cold weather and very little snow; maybe that is why no one is really ready for Christmas. (It could be that we had only three weeks between the

two holidays!) I know that I will be cooking right up to the last minute, and I won't finish shopping until the bitter end. I am tired already! I am looking forward to the prime rib dinner on Christmas. I also hope to get my cookies and cards finished. I will give you a report next week. If you have some recipes for the New Year you would like to share, you can send them our way. You can contact us in person, by mail at From Lena's Kitchens, *Shopper's Guide* at 213 S. Center St. or email us at scoopshopper@rvpublishing.com.

In leaving our time together today, I would share with you my traditional Christmas message that I received many years ago from a dear friend. It has certainly been true this year for our family. Remember that—"Every time a hand reaches out to help another...that is Christmas. Every time someone puts anger aside and strives for understanding...that is Christ-

mas. Every time people forget their differences and realize their love for each other...that is Christmas. May this Christmas bring us closer to the spirit of human understanding, closer to the blessing of peace." May

the blessings of Christmas be on all of you as we celebrate the birth of the Christ Child and the promise of eternal life. Merry Christmas from Lena's Kitchen and the not so skinny cook.

Woody's Auction Service

Annual Antiques and Collectibles Auction

New Year's Day • January 1, 2020

Poplar Grove Fire Dept., District 3
 305 W. Grove Street

Open at 8 a.m. • Start at 10 a.m.

For complete listing and pictures,
 log on to auctionzip.com

For further info, call Kris at 815-544-0249

364318

The Scoop Today & Shopper's Guide Service Corner

PEARL CITY SEAMLESS GUTTERS INC.

5" & 6" Seamless Gutters & Gutter Guards Available. Multi-color, Color Match.

Owner Operated with over 36 Years Experience

Rusty Liebenstein 815-291-6449
 Dan Kempel 815-291-5988

234987

Place Your Service Ad

Minimum of 4 weeks Additional Sizes Available

DeVoe License & Title Service

219291

216 W. Main • Lena
 815-369-5549
 Mon-Fri 10 a.m. - 4:30 p.m.
 Saturday 10 a.m. - 2:30 p.m.

BUSSIAN INSURANCE AGENCY



PRICE • COVERAGE • SERVICE



Gretchen Scheider

- Auto • Motorcycle • Boat • Snowmobile • RV • Home • Renters • Condo • Rented Dwelling • Mobile Home • Business • Farm • Life • Med. Supp. • Disability • Annuities •



Joe Werhane

www.bussianinsurance.com

335220

240 W. Main St., Suite C • Lena, IL
 Call for a quote • 815-369-4747

G & H PAINTING

Interior & Exterior Painting & Staining
LENA, IL

Fully Insured

Brent Geilenfeldt 815-369-5368 • Cell 815-275-1069

Adam Heimann 815-275-6450

111032

KW ELECTRIC



Commercial • Agricultural Residential • Industrial

Call us for any of your electrical needs

Nick Wienand • Greg Kline
 Call: 815-908-0775 Stockton, IL

357461



Formerly Checkered Flag Auto Body, Lena

Call us for your FREE estimate today!
 • 35 years experience
 • Loaner cars available
 • All makes & models
 • All insurance work welcomed!

4933 N. Scout Camp Rd., Apple River, IL 61001

815-492-0114

M-F 8-4 • Sat by appointment

362138

RICK'S SALES & SERVICE

APPLE RIVER, IL
 815-492-2102

Hours: M-Th 11-7; Fri 9-5; Sat 9-1

Check out our website at rickssalesandservice.com



STIHL®

Simplicity®

207460

Werhane Total Truck Repair

Straight Trucks - Semis - Dump Trucks - Farm Type Vehicles including Farm Tractors

FAIR • FAST • FRIENDLY

- Clutches • Brakes • Welding (Steel & Aluminum) • Electrical • Lube & Oil Change • Suspension • King Pins • Transmission & Drive Line • Differentials • Tune Ups • Over Hauls • Minor Body Work • Tractor-Trailer Wash • Air Conditioning

KEEP US IN MIND FOR ALL YOUR REPAIR NEEDS

Ask for Brian Call Now! 815-369-4574



Werhane Enterprises

509 E. Main St. • Lena • 815-369-4574

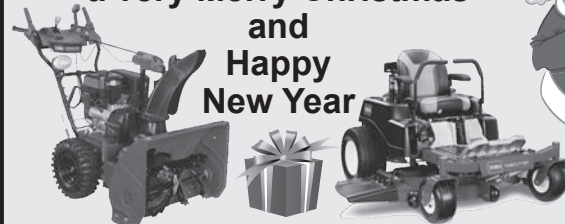
2020-1-15-20-03

364202



Your local Toro Dealer & Master Service Center

Wishing you and your family a very Merry Christmas and Happy New Year



10240 N. Old Mill Rd. • McConnell, IL 61050
 815-541-3348 • heidrepair@yahoo.com
 Repairing & servicing all brands of mowers & small engines.

362669

Northern Illinois & Southern Wisconsin

For Classified Advertising Call



(815) 369-4112
(815) 947-3353
Fax: (815) 369-9093

Classifieds

Business Hours:

Mon.-Fri.
9:30 am-4:30 pm
For your convenience
Visa & Mastercard
are accepted



EMPLOYMENT

Help Wanted

Employment Opportunity Stockton High School

Position: Agriculture Education

Salary: Based on current negotiated contract per educational level and years of experience. Excellent benefits including health, dental and vision insurance.

Duties: Stockton High School has a job opening for an Agriculture Education teacher for the 2020-2021 school year. This position includes teaching assignments in 9th-12th grades and one section of 7th grade. A 10 month contract is a possibility with this position.

Successful Candidate Qualifications: Current Illinois Professional Educator License with proper endorsement to teach Agriculture Education and other duties as assigned. Responsibilities of this position include, but are not limited to the following: utilizing different teaching methods to meet the instructional needs of individual students; developing lesson plans; communicating regularly with parents on student performance; developing classroom standards to maintain student discipline and behavior; and collaborating with the FFA alumni.

Application deadline: February 28, 2020.

Application Process: Please send cover letter, resume, transcripts, 3 letters of recommendation, and a copy of Illinois Teaching License to Mrs. Casey Downey, High School Principal, 540 N. Rush St., Stockton, IL 61085 or email to casey.downey@stocktonschools.com.

364263

Sales/Marketing

ADVERTISING SALES EXECUTIVE

Rock Valley Publishing, your hometown newspapers serving the stateline has an opening for an experienced Media Sales Representative to call on current and new accounts in a protected sales territory.

Growing area with many new businesses, this is a great opportunity for the right applicant.

We publish newspapers, shoppers and niche publications throughout the stateline. You have the opportunity to sell into all Rock Valley Publishing, L.L.C. publications, making your paycheck much larger!

For immediate consideration send resume/job history to:

Vicki Vanderwerff, Director of Advertising
Email: vicki@southernlakesnewspapers.com
Fax: (262) 725-6844

316524

To place an ad in our
Help Wanted Section

Call Laurie at (815) 369-4112

FOR RENT

Apartments

CLAYTON COURT APARTMENTS

51 Clayton Ct. • Winnebago, IL 61088

Call today to request an application!

1-815-339-2140

Immediate Openings for 1 & 2 BR apartments. Rent includes water, sewer & trash. Amenities are: range/refrigerator, A/C, off street parking, W/D hook-ups as well as on-site laundry.



Now managed by
Haun Management Systems,
an equal opportunity provider.



Two Bedroom 2nd floor, \$475/mo. Washer/dryer hook-ups, all new flooring, newer appliances. Available on or before January 1st. Call Bruce 815-238-6307

REAL ESTATE

Other Real Estate

PUBLISHER'S NOTICE All real estate advertising in this newspaper is subject to the Fair Housing Act which makes it illegal to advertise any preference, limitation or discrimination based on race, color, religion, sex, disability, familial/ status or national origin, or an intention to make any such preference, limitation or discrimination. Familial status includes children under the age of 18 living with parents or legal custodians, pregnant women and people securing custody of children under 18. This newspaper will not knowingly accept any advertising for real estate which is in violation of the law. Our readers are hereby informed that all dwellings advertised in this newspaper are available on an equal opportunity basis. To complain of discrimination call HUD toll-free at 1-900-669-9777. The toll-free tele phone number for the hearing impaired is 1-800-927-9275. EQUAL HOUSING OPPORTUNITY

Rural & Farm Properties

- Small & Large Acre Farms
- Prime Hunting Land
- Horse Farms
- Lake & Vacation Properties

Call Laurie
815-369-4112
for more details
on placing an ad
in our
**REAL ESTATE
SECTION**

65534

FOR SALE

Announcements

CLASSIFIED IN-COLUMN ADS cannot be credited or refunded after the ad has been placed. Ads canceled before deadline will be removed from the paper as a service to our customers, but no credit or refund will be issued to your account.

DISCLAIMER NOTICE This publication does not knowingly accept fraudulent or deceptive advertising. Readers are cautioned to thoroughly investigate all ads, especially those asking for money in advance.

AUTOMOTIVE

Automobiles

2002 FORD FOCUS 5 door Station Wagon. 93K. \$1,500. 262-210-1936.

2005 SATURN VUE 4 cylinder, 179,563mi., runs good, very good cond., all options. \$2,950 262-279-6332

2006 MUSTANG GT 5.0 5 sp. Excellent condition. Garage kept. Looking to trade even up for a AWD or 4WD Pick up. 414-218-6398.

2007 MERCURY GRAND MARQUIS. 90K. Very good condition. \$5,600 OBO. 262-835-4174.

2007 SATURN VUE AWD, V6. 127,318 miles, runs good, very good condition. \$3950 OBO. 262-492-9613.

2014 CHEVY EQUINOX AWD, 39k, one owner, garage kept, asking \$14,000. 262-353-6029

Boats

1987 ALUMI CRAFT 17 ft. w/60hp Johnson, complete rebuilt in 2015. Runs great. 55lb Minkota, incl. 3 batteries. Hull needs work. \$1,500 OBO. 262-758-7994.

AUTOMOTIVE

Construction Equipment

CASE 580K BACK HOE Extended boom, 2,000 hrs. Ex. cond. \$15,000 OBO. Located in Crystal Lake, IL. 704-502-8439 Call or Text.

Farm Machinery

ENCORE PARTS MOWER Pro 48, \$75. Wanted: truck, car, electric bike, 50 cc scooter. 847-987-7669 noon +

FORD 4100 GAS Wide front with loader. \$5,500. 262-835-4174.

INTERNATIONAL M TRACTOR 1949 with narrow front end. 3 point hitch, thresher pulley, runs great. \$1,800. Days 262-909-2878, eve., 262-862-7070.

Snowmobiles

2013 YAMAHA RS VECTOR LTX Studded track. Excellent condition. 2,377 miles. \$4,800. 262-210-9336.

Sports/Classic Cars

1990 CHRYSLER IMPERIAL Bright white w/red leather. Beautiful cond. \$5,995. 262-325-3541.

'67 MUSTANG DISASSEMBLED Many new parts, too much to list. \$6,000 OBO. Dennis 262-914-1091.

Semis

1988 Mack R-Model. Plus dump trailer. \$18,000. Call Jerry for more info 815-509-5817.

Mack Radiator Early 1980's and older. \$575 Call Jerry for more info 815-509-5817

To place an ad in our
Business & Service
Section

Call Laurie at
(815) 369-4112

The Wheel Deal



Place your car, truck, motorcycle, boat or RV for one price and it runs for up to 16 weeks.

\$19⁹⁵

1st three lines

Extra lines are \$1.95 each

17 papers

Starts for 4 weeks and if not sold you call us and we will renew at no additional charge!
(Maximum run 16 weeks total)

PRIVATE PARTY ONLY.

Ad must be prepaid. Deadline Friday 4 p.m.

Call 815-369-4112

332805

Girl Scouts kick off 2020 cookie program

•Results

(Continued from front page)

Area Girl Scouts opened the 2020 Girl Scout Cookie Program with on-line sales Monday, Dec. 16! Digital Cookie 6.0 allows girls to take electronic orders for cookies. Customers have the ability to order and pay for cookies online and have the option to have the cookies shipped directly to them (shipping charges ap-

ply), have the Girl Scout deliver the cookies to them, or donate cookies (with no additional handling fees).

If customers would like to have Girl Scout Cookies for holiday gift-giving (or for themselves!), they should tell the Girl Scout in their lives to send them an email from their personalized website

as soon as possible! Don't know a Girl Scout? Email cookies4you@girlscoutsni.org to be connected to a local entrepreneur who would love to add you to her customer list!

Area Girl Scouts will also take cookie orders in-person (and online) from Jan. 8–Feb. 2, 2020. The cookie lineup features refreshing Thin

Mints, caramel-y Samoas, peanut butter-stuffed Tagalongs, crunchy Do-si-dos, buttery Trefoils, sweet S'mores, toffee-chipped Toffee-tastics (gluten free, too!), and more. Cookies are on sale for \$5 per box!

During Girl Scout Cookie season, each G.I.R.L. (Go-getter, Innovator, Risk-taker, Leader)TM sets out to sell delicious cookies while also building entrepreneurial and business skills imperative for leadership and future success. All of the net revenue raised—100 percent of it—stays within the northern Illinois area.

Girl Scouts of Northern Illinois uses cookie earnings to power amazing experiences for girls through their programming, while girls and their troops decide how to invest in impactful community projects, personal enrichment opportunities, and more. Skills girls learn in the cookie program also influence later success as data shows more than half (57 percent) of Girl Scout alumnae in business say the cookie program was beneficial to skills they possess today, such as money management, goal-setting, and public speaking.

Many species were down in numbers, including: 36 red-tailed hawks, down from their record of 184 in 1995; six rough-legged hawks, down from their record of 36 in 1981; 85 feral pigeons, down from their record of 460 in 1996; 36 black-capped chickadees, down from their record of 169 in 1993; 10 tufted titmice, down from their record of 60 in 2014; six robins, down from their record of 821 in 1981; 151 European starlings, down from their record of 1472 in 1996; seven American tree sparrows, down from their record of 1083 in 1981; 32 cardinals, down from their record of 640 in 1968; and 324 house sparrows, down from their record of 1800 in 1971.

Mr. Ingram used to be able to predict what the rest of the winter would be like from the birds seen during this count, but not this year. This year with no summer birds present, and no winter birds present, there is nothing available to indicate what type of winter the rest of the season will be.

The future of all of our birds does not look good, unless we stop the tremendous amount of agricultural spraying occurring in the area that is killing off our birds and insects.



From our Parkview Family to yours - Best Wishes for a Joyous Holiday Season and a Happy New Year!



Parkview's continuum of care provides all levels of care from independent living to 24 hour nursing care.

Do you have a loved one that would benefit from 24 hour nursing care?

Is your loved one getting the care they need and deserve?

We currently have openings in 24 hour nursing care and memory care.

Call 815-232-8612 to schedule a tour and see and feel the difference yourself!

Parkview Retirement Community
1711 W. Church St., Freeport, IL
www.parkviewhome.org



364350



your source for on-line news:

RVPNEWS.COM

Sandwiches

- All Sandwiches include fries
- Italian sausage w/marinated sauce 5.99
- Combo beef and sausage 6.99
- Italian beef with cheese 5.99
- Pork tenderloin 5.99
- Patty melt with grilled onions 5.99
- Tuna melt with american cheese 5.99
- Grilled ham and cheese 5.99
- Meatball sandwich with red sauce and mozzarella 5.99
- Croissant sandwich 5.49
- Grilled cheese 4.99
- Crispy chicken 5.99
- Grilled chicken 5.99
- Cajun chicken breast 4.99
- add bacon and cheese 1.00
- Chicken club (grilled or crispy) 5.99

Fajitas

- Chicken fajita (pita or tortilla) 5.29
- Steak fajita (pita or tortilla) 6.29

Burgers

- All burgers include fries
- 1/2 lb. burger 4.99
- 1/2 lb. cheeseburger 5.99
- Double burger 6.99
- Double cheeseburger 6.99
- 1/2 lb. bacon cheeseburger 5.99
- 1/2 lb. mushroom swiss burger 5.99
- Double bacon cheeseburger 7.99
- Avocado burger 7.99

Ribs

- Ribs include fries, coleslaw & garlic bread
- 1/2 slab ribs 10.99
- Full slab ribs 17.99
- Fried chicken w/fries & coleslaw 7.99

Tacos

- All tacos 2.00 each
- Asada (steak), Al Pastor (pork), Ilegales (pork and steak), Carne (beef), Lengua (tongue), Pescado (fish)

Taco Dinner

- All taco dinners include 3 tacos, rice and beans 7.29 each
- Asada, Al Pastor, Ilegales, Carne (beef), Lengua (tongue), Pescado (fish)

Quesadilla

- All quesadillas include grilled onions & peppers 5.50 each
- Asada (steak), Al Pastor (pork), Ilegales (pork & steak), Chorizo, Carne (beef)

Burritos

- All burritos include cheese, beans, avocado, lettuce, tomatoes and sour cream
- Asada (steak) 6.50
- Al Pastor (pork) 6.50
- Chorizo 6.50
- Carne (beef) 6.50
- Lengua (tongue) 8.50

Pizza

	Sm 10"	Md 12"	Lg 14"	Xlg 16"
Cheese	7.00	8.00	9.00	10.00
Meat Lover	9.00	11.00	12.00	14.00
Veggie Lover	8.25	9.50	10.75	12.00
Hawaiian	8.50	10.00	11.50	13.00
Chicken Bacon Ranch	8.50	10.00	11.50	13.00
Everything Sp.	9.00	11.00	12.00	14.00
Add extra for Small & Medium Large & Extra Large	2.00			

Starters

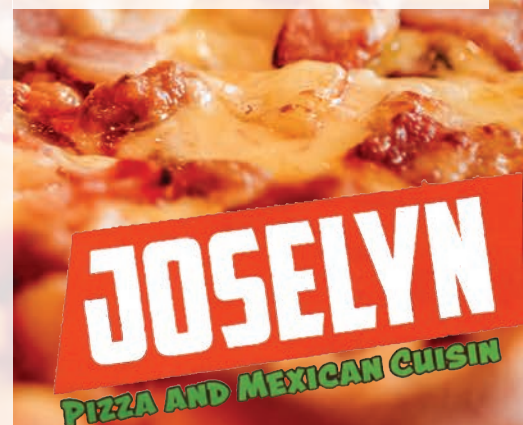
- Garlic bread & cheese 2.99
- Bread sticks (5) 3.99

Appetizers

- Mozzarella sticks (6) 4.99
- Cheese curds (18) 5.99
- Boneless wings (8) 5.99
- French fries 2.19
- Chicken strips (4) 4.99
- Traditional wings, BBQ or spicy
- 10 pcs 9.25
- 15 pcs 13.50
- 20 pcs 17.25

Daily Dish

- Different food dishes each day. Call and ask us!
- Dish 7.49



435 W. Lena St. • Lena
815-369-9777