

# McHenry County News

VOL. 11 • NO. 15

PUBLISHED BY ROCK VALLEY PUBLISHING, LLC

THURSDAY, APRIL 15, 2021



**DIEDRICH  
CONCRETE INC.**  
815.239.1158  
PECATONICA, IL

**25+ Years Experience!**

393553

**Free!**DISPLAY  
ADVERTISING &  
CLASSIFIEDS:  
**815-877-4044**CIRCULATION:  
**815-877-4044**E-MAIL:  
**McHenry  
News@RV  
Publishing.com**

COURTESY PHOTO McHenry County News

## McHenry summer camps

The following summer camps are being offered through the McHenry County Conservation District: Young Explorers Camp (ages 6-7); Nature and Art Camp (ages 8-9); Hunter Safety Camp (ages 9-17); Outdoor Adventure Camp (ages 8-11); Police Camp

(new-ages 10-15); Eco-Explorer Camp (ages 8-11); STEEM Camp (ages 10-12); Time Travelers Camp (ages 10-12); and Wild Things Camp (w/ overnight-ages 12-15). Visit [www.mccd.org](http://www.mccd.org), click on Learn and Experience and follow the registration links.

# Outdoor conservation district programs

The focus is on fitness with Cross Fitness Trail Hike (intermediate/advanced), Saturday, April 24, at 10 a.m., Hickory Grove Highlands Shelter #1, 500 Hickory Nut Grove Road, Cary.

This class incorporates functional fitness movements along the way during this guided fitness hike. This is great for athletes and those with experience with high intensity workouts and outdoor race experience. Emphasis is placed on proper

technique and workout strategies. No equipment needed; dress for fitness and weather.

Get outdoors and make an impact with "Earth: A Place to Live, Learn, and Work," Saturday, April 24, at 8 a.m., Glacial Park, Ringwood. Earth will be the theme of this Spring Weekend of Restoration weekend—not Earth the planet but earth the second of the ancient Greek elements that made up the universe: fire, earth, air and water.

Earth is substance, matter, form, and change, all subjects of modern natural sciences, but earth also gives human beings space, location, place and the possibility of belonging somewhere. Participants will explore together how all of these perspectives come together to inform our current reforestation efforts. Plant native trees and shrubs and build protective cages at beautiful Glacial Park. Participants will spend the day outdoors; come

dressed for the weather. Registration fee includes a box lunch. Visit the Weekend of Restoration Facebook page by searching @MCCDWEOR.

Hurry; limited spots are available for these April programs. Registration is required for all participants for these programs. Participants must

wear a face covering and practice social distancing during participation. Visit [MCCD.org](http://MCCD.org) for more information and to register.

## Medicine disposal event April 17 in Crystal Lake

On Saturday, April 17, the Crystal Lake Police Department will take part in the Crystal Lake Chamber of Commerce Community Clean-Up Day event.

The event includes collecting your old or unwanted prescription drugs\* from 9 a.m.

to noon. A squad car will be parked in front of the chamber building at McCormick Park, located at 427 W. Virginia St.

The following items will not be accepted:

- Needles (sharps)
- Thermometers
- Inhalers

- Hydrogen peroxide
- Ointments, lotions or liquids

\*Prior to drop off, be sure to remove all labels or black out information containing name, phone number, address and doctor's information with a marker.

## Distracted Driving Month

April is Distracted Driving Awareness Month across the nation, and the Huntley Police Department is urging drivers to drop their phones and focus on the road with a not-so-sub-

tle reminder: "Phone in One Hand. Ticket in the Other."

"No text is worth endangering your life or others. Please work with us in keeping our roadways safe from distract-

ed drivers," said Chief Robert Porter. During April, you will see increased law enforcement efforts as officers stop

See **DRIVING**, Page 9

## Ultralight pilot in fatal crash identified

On April 3, at approximately 6:54 pm, the Huntley Police Department and Huntley Fire Protection District were alerted to a downed ultralight in the area of Powers Road and Samantha Lane, in an open field behind the Culver's restaurant (12950 S Illinois Route 47). Upon arrival, a 54-year-old man was found to be injured from a rapid descent, which was described as several hundred feet. The man was

treated by Huntley Fire Protection District personnel and then transported to Northwestern Medicine Huntley Hospital.

The operator of the ultralight passed away and is identified as James W. McCulla Jr., age 54, of Huntley.

Observers in the area reported the ultralight took off from the immediate area, and the operator quickly banked. Shortly after the bank, the ultralight

went into a slow spin. The ultralight then struck the ground. The ultralight was described as a carbon paramotor ultralight, which is essentially a parachute with a fan motor attached to the operator.

As of press time, there were no autopsy results to determine the cause of death. The autopsy was being conducted by the McHenry County Coroner's Office.

*Prairie View*  
offers:

- Individual apartment homes
- Private patios
- Kitchenettes, walk-in showers
- Full dining services
- Housekeeping & laundry service
- Emergency call system
- 24 hour a day in-house caregivers
- Social and recreational programs
- Access to rehabilitation services

*Prairie View*  
Assisted Living Community

Call **815-335-1800**  
500 East McNair Road • Winnebago, IL









# 4-H'ers excel in public speaking contest

The University of Illinois Extension, Boone County Office hosted a Public Presentations Contest on Saturday, Feb. 20, 2021, for 4-H'ers to give formal, illustrated, oral interpretation or original works speeches. Fifteen 4-H'ers participated in the contest and each received a Blue Rating from the team of three judges. This year due to COVID-19 restrictions the participants were each assigned a time and presented their speeches to the panel of three judges and the participants' parents only. The participants, their speeches, and awards were as follows:

- Allyson Aves – Formal Speech – “The Modern Consumer”
- Lars Carlson and Justin Irwin – Original Works – 2 Person Team – “Mike & Carl Go Fishing”
- Elinor Ellingson – Illustrated – “An Inside Look at the Wardrobe of a Victorian Lady”
- State Fair Alternates:
- Breanne Lessard –Illustrated – “Greek Mythology”

- Brooke Glander – Illustrated – “How the Work of My 4-H Livestock Project has Impacted My Life!”
- Liam Ellingson – Illustrated – “The Golden Age of Virtual Reality”
- Other Participants:
- Madelyn Aves – Formal Speech – “Calf Care”
- Savannah Mirabal – Illustrated – “The Main 6 Avengers”
- Sophia Mirabal – Illustrated – “Welcome Aboard the Titanic!”
- Julia Rudy – Illustrated – “Slap Hitting: Purpose and Practice”
- Evelyn Rudy – Oral Interpretation – “Norway is Us”
- Alicia Downey – Original Works – “Hades and Persephone”
- Faith Beasley – Formal Speech – “Abraham Lincoln History”
- Willard Rozanas – Original Works – “Life Next to the Beagle”

For more information about the Boone County 4-H program, contact the Boone County Extension Office at 815-544-3710.



Submitted photos Rock Valley Publishing  
Above: Allyson Aves received a State Fair award for her formal speech entitled “The Modern Consumer.” Right: Elinor Ellingson earned a State Fair award for her illustrated speech “An Inside Look at the Wardrobe of a Victorian Lady.”



## Belvidere fire calls

The Belvidere Fire Department responded to 54 calls April 5 to 11.

### Monday, April 5

BFD responded to 1 medical call and the following fire/rescue calls.

1900 block of N. State St. - outside equipment fire

500 block of Park Ave. - no incident found on arrival

### Tuesday, April 6

BFD responded to 4 medical calls and the following fire/rescue calls.

2700 block of Francis St. - smoke/odor removal

1700 block of Henry Luc-kow Lane - call cancelled en route

### Wednesday, April 7

BFD responded to 6 medical calls and the following fire/rescue calls.

1500 block of Fremont St. - HazMat release investigation

100 block of S. State St. - motor vehicle accident

300 block of Warren Ave. - attempted burning, illegal

N. Appleton Road/Lake-shore - dumpster fire

### Thursday, April 8

BFD responded to 4 medical calls and the following fire/rescue calls.

11100 block of Abbotsford

Place - cooking fire

2800 block of Huntington Dr. - call cancelled en route

1300 block of Perrsons Pkwy. - unauthorized burning

Buchanan St./S. State St. - good intent call

### Friday, April 9

BFD responded to 5 medical calls and the following fire/rescue calls.

1200 block of Union Ave. - public service

1400 block of 14th Ave. - water or steam leak

1300 block of Pondview Dr. - unauthorized burning

200 block of N. State St. - public service

### Saturday, April 10

BFD responded to 2 medical calls and the following fire/rescue calls.

5th Ave./6th St. - motor vehicle accident

2200 block of Iris Ave. - Assist invalid

### Sunday, April 11

BFD responded to 11 medical calls and the following fire/rescue calls.

1700 block of 5th Ave. - fire alarm

2200 block of Iris Ave. - public service

6700 block of Imron Dr. - fire alarm

## • Sell

(Continued from page 2)

“we’re going to need a code study to see that we’re going down the right road; decide the footprint of the building and how many square feet are in it; where it will be located; and what you’re going to put in there. I don’t think we can just look at a pole barn.”

Looking at the immediate future, he added, “I think it would be great for our board, however they would do it, to go out there (storage building) and see what we have.”

After that, Schabacker suggested looking at the existing building, where there is room for an addition.

“Here you have city water and sewer, so you don’t have to worry about that. I really think you have an excellent building. It has concrete walls for security. I think we should see what we have before we let it go.”

Board member Ray Larson said the sheriff’s office is not only using the building for storage, but for office space as well.

“If you build a new building, or get another one, there should be an estimate on how much office space would be needed. Just a round-about figure.”

Another board member, Dave Wiltzie, agreed he would like to know the expansion possibilities of the existing building “and not just a Band-Aid approach. Also, what would the estimated cost be of a replacement of the size and nature we’re talking about? Are we talking about \$800,000? \$2 million? So, maybe when we get this appraisal and look at what we have, we can also get an idea of what it will cost to replace it.”

According to Catlin’s memo to the board, “County administration believes it will be in the best interest of the county to sell the property to a developer that will contribute to the economic vitality of the business corridor and Belvidere in general.”

Johnson said he would be talking with staff about some of the previously mentioned steps.



Justin Irwin and Lars Carlson won a State Fair award for their original work “Mike & Carl Go Fishing.”

## New RVC Advanced Technology Center

Rock Valley College’s Advanced Technology Center (ATC) will become a workforce and economic development engine that helps sustain and grow the manufacturing industry in our region by providing innovative hands-on learning to prepare both RVC students and currently-employed workers for high-demand jobs with local manufacturers.

RVC’s Advanced Technology Center (ATC) is a regional approach that has commitment and collaboration from regional partners that will help transform the region through education and workforce development.

This new, state-of-the-art, 77,000-square-foot facility will be conveniently located off Business 20 in Belvidere, and will house many of RVC’s manufacturing, technology, and industrial-based programs.

The ATC will offer both credit and non-credit programs, including certificate programs and stackable credential models that can be completed in as few as five weeks. Please keep in mind each program has limited seating.

Programs that will be offered at the ATC starting in Fall 2021 include:

CNC Machining: This program delivers a customized curriculum to prepare you for a career in advanced manufacturing in just six to eight

weeks. You will learn the skills necessary to enter the manufacturing environment at an entry-level position with a solid foundation of shop math, blueprint interpretation, metrology and CNC setup/operation skills. This program provides an entry path to a CNC career and a great foundation for anyone interested in pursuing our CNC certificate for college credits.

Industrial Maintenance: This fast-track certificate is uniquely designed to provide education and training in a variety of maintenance and repair technician skills to meet the growing demand for the manufacturing industries in our region. The program consists of training identified from disciplines that include root cause failure and analysis, PLC, shaft alignment, pneumatics, hydraulics, electrical motor controls, robotic programming, gear drive systems, industrial electricity fundamentals, introduction to instrumentation, shop math and pump systems. These courses will form a new certificate program that will expose students to a common core of maintenance and operation trade skills and introductory theory needed in the manufacturing industry.

Mechatronics: Mechatronics is an emerging field that blends skills in

mechanical, electrical, and computer systems. Mechatronics technicians and engineering technologists use a combination of mechanical, electrical, computer, and software skills to work with smart technologies, such as robots, automated guided systems, and computer-integrated manufacturing equipment.

Truck Driver Training: In just five weeks you can be on the road to a new career! Our 200-hour truck driver-training program combines classroom presentation with hands-on experience that leads to a Class A Commercial Driver’s License. The course will provide you with the basic skills to become a safe, professional truck driver. Upon successful completion, you will be able to secure an entry-level position in the trucking industry.

Welding: Our welding program is one of the most comprehensive in the area. You’re given the opportunity to develop skills using common, manual, and semi-automatic welding processes. Industrial safety, blueprint reading, basic metal fabrication, and welding will prepare you for an entry level position in welding, construction, manufacturing and fabrication industries. Certificates offered include Advanced Welder and Industrial Welder.



# VIEWPOINT

## Slices of life

### Toes are meant to be seen and not housed

My toes are always the first to come and the last to go. As the seasons change, and the weather warms in the spring, I can't wait to get rid of my real shoes in exchange for sandals. Weeks before the warm weather actually arrives, I polish my toes in anticipation of the big event.

The opposite occurs in the fall. I wait until the very last minute, when the winds are chilly and frost-heavy leaves cover the ground. It is only then—when snow is imminent and Mother Nature snuffs out any inkling of summer—that I pull socks out of the drawer and put on shoes that will house my



By  
**JILL  
PERTLER**  
Columnist

toes and keep them jailed for the long winter. I always do so with great remorse.

Toes aren't meant to be kept inside, locked up. They get sweaty. They get cramped. Shoes that house toes cause all sorts of ugly things like corns, athlete's foot, toe jam, and blisters. Blisters hurt.

But, for most of us, jailing our toes during the winter

months is inevitable. The temperature dips, our toes get cold, and we are practical people. Cold toes can cause the shivers, cracked skin, and even frostbite. Nobody likes frostbite, so we pack 'em up and put 'em in.

And there they sit—quiet, cramped, and sweating—in the dark, waiting for spring.

There is nothing like the freedom of fresh-air shoes. I own more sandals than regular jail-shoes and I'm not embarrassed to admit it. They may not provide arch support or protection from the elements, but they are fun. They come in all sorts of impractical colors

like pink, orange, and lime green. They flip and flop and sometimes have that little thingy that goes between your toes. What they lack in comfort and sensibility they make up for in style, style, style.

There is much to be said for the benefits and joys of sandal ownership. Quite simply, sandals provide options and opportunities not available to sock-clothed feet. Take toe rings, for example. They're cute. They're trendy, but just try to wear one under your socks. Ouch. Ankle bracelets are another chic item fashioned exclusively for the open-toed crowd.

And, of course, there's the most important accessory of all—toenail polish. Polish shows off your toes to their best advantage. It makes a statement. A fresh coat of polish shines upward and gleams in the sun. Depending on the shade, it sets the mood—from classic, to hip, to cutting edge.

My toes are currently prepping for this year's coming out party. It has been a long winter, and we are ready for some open-air fun. I've fished ankle bracelets and toe rings out of winter storage. My sandals wait eagerly in the closet for the go-ahead signal. As for me, I contemplate the bottles of nail

polish sitting patiently on the shelf.

Which will it be? Pale pink? Magnificent magenta? Outrageous orange? Brazenly bronze? I reach in and select a shade of bright crimson. Always a classic way to make an entrance, it's a good choice to start the season. Besides, it will go great with my new lime green flip-flops.

*Jill Pertler is an award-winning syndicated columnist, published playwright, author and member of the National Society of Newspaper Columnists. Don't miss a slice; follow the Slices of Life page on Facebook.*

## Weekly connection

### Old tractors still at work

This last week we had some great weather, and I was able to get out in the fields and get some oats drilled. Since I want a nice smooth alfalfa field next year, I chisel plowed the ground and then disced it twice to make it nice and even. Once I had it all worked up, it was time to put the oats and alfalfa seed in the ground.

I had borrowed my brother's Case IH 285 Magnum tractor to do the chiseling and discing but that tractor was way too big for the drill, so we hooked up his International Farmall 1206 instead. Her shiny paint and wide front end got my



By  
**SCOTT  
CERNEK**  
Columnist

adrenalin pumping to say the least. I threw on my insulated coveralls and headed out to the field ready to roll.

There I was out in the open air the way we used to do it. There was no heater, no air conditioning, no gps control, not even a radio. It was just me, God, and the

great outdoors. I can't begin to tell you how nice it was to step back into time a little. It took me back to the late '60s, through the '70s and even into the '80s when we first bought and did so much farming with our International Farmall 706.

Our new 706 was shiny red and had a wide front end just like the 1206. It was our big boss tractor at the time. With it we pulled a five-bottom plow, a 14-foot disc and the haybine and chopper as well. It was our big tractor and did all the heavy lifting back in the day.

A few years ago, however, she was pushed aside for

bigger tractors and machinery. At some point with limited use, she had engine trouble and then sat in the shed just waiting for the day of reckoning. After some debate by the family, instead of junking this old beauty, we had a rebuilt diesel engine put in her and then repainted last summer. Now we're just waiting on a couple more tweaks or I would have used the 706 to drill the oats with. That would have been fun.

Anyway, with great exuberance, I finished the field, completed all the end rows and headed back to the home farm

feeling like a million bucks. There's something special about watching those front tires turn in the rich black dirt.

My Dad used to use the M to drill and we would ride on the bench at the back of the drill when my Dad planted oats years ago. We would ride for a while and then hop off and run in the soft dirt with our bare feet. Those were some great memories.

I love thinking back on these memories. Have you ever wondered what the Bible means when it says in Luke 2:19 that after the angel spoke to Mary about her being God's

chosen woman to bear the son of God, she treasured up all these things and pondered them in her heart?

Mary always remembered what the angel said to her that day, and she held on to his words even when Jesus hung on the cross. I wonder what their first conversation was like after Jesus was Resurrected back to life. I bet she pondered those words as well. I trust you had a wonderful Resurrection Day celebration, my fellow believer, and that God gave you some great truth to ponder on throughout the coming year.

Until next week, God bless!

## Back in the saddle

### Winnebago-Boone Farm Bureau: Spring fever

By Ann Marie Cain, FBCM MANAGER, WINNEBAGO-BOONE FARM BUREAU

The recent warm weather and rain has brought on spring fever. Farmers have started the necessary field preparation, and a few have started planting. Planting season means farm equipment is back on the roads. Keep a watchful eye out for the orange triangle (Slow Moving Vehicle or SMV) signs located on the back of farm equipment as it travels the roads between the farm and field. See orange – Slow down!

Here are a few more safety

tips and reminders for both motorists and farmers to help prevent accidents on the roads during planting season. Please stay alert, be patient, and when you see farm equipment ahead, slow down.

#### Motorists:

- Reduce speed when encountering farm equipment on public roads. Flashing amber lights mean "Caution."
- Slow down when you see the Slow-Moving Vehicle (SMV) Emblem- the orange and red reflective triangle warns you that the tractor or combine travels at a slow rate of speed.

• Keep a safe distance from the farm equipment so the farmer can see you. If you can't see his mirrors, he can't see you.

• Pass wide, large farm equipment only if you know conditions are safe and you are sure the farmer will not be making a left-hand turn. Be cautious when pulling back in.

• It is illegal to pass in a No Passing Zone or within 100 feet of an intersection, railroad crossing, or bridge.

- Be prepared to yield to wide equipment.
- Always wear a safety belt

and heed the road's speed limit.

• Watch for the farmer's indication of a turn. Newer equipment has one or more amber lights flashing rapidly to indicate a turn. Older equipment is typically not equipped with turn signals so watch for farmer's hand signals.

#### Farmers:

- Plan travel to avoid rush hours, bad weather, the busiest roads, and the time before daylight and after dark.
- Be obvious to motorists by proper use of reflective SMV

emblems on any implement of husbandry operated on public roadways. It's the law!

• Use reflective marking tape and reflectors on the extremities of equipment.

• Turn on hazard lights mounted on farm equipment and turn off field work lights for all roadway travel.

• Install mirrors that are wide enough for you to see what is following you.

• Always use turn signals to indicated plans to turn into fields or driveways.

• Be aware of traffic-oncoming, in front of you, and

behind you.

\* If road and shoulder conditions are safe, *pull over temporarily* to allow traffic to pass.

• Slow down on turns and curves. Check the traffic behind you.

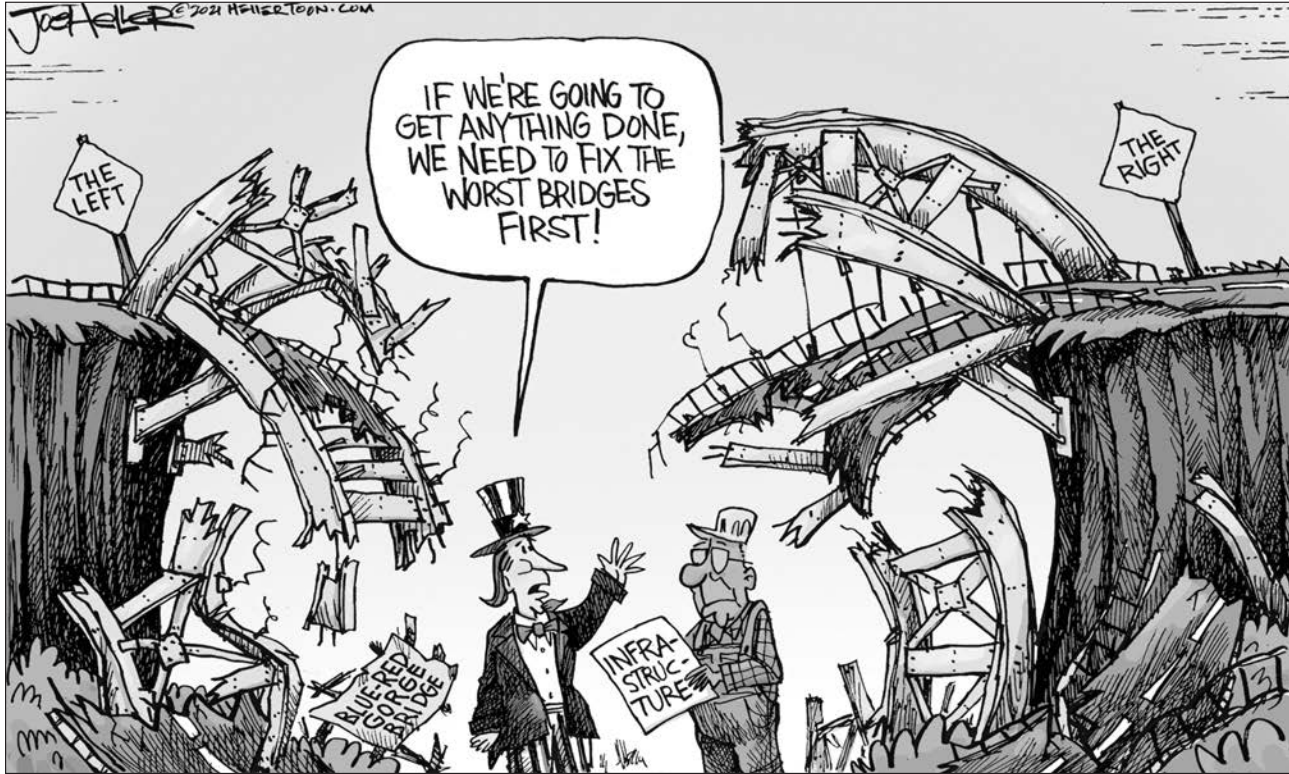
• Minimize the width of equipment as much as possible. You may not interfere with traffic in the adjoining lane.

• When practical, truck larger equipment to the next location.

Wishing everyone a safe planting season!

## LETTER POLICY

We encourage readers to submit letters to the editor. To be considered for publication, all letters MUST be signed with the writer's full name. *An address and telephone number (which will not be printed) must be provided for verification purposes.* Letters exceeding 250 words may be edited for length. No potentially libelous letters or letters containing personal attacks will be printed. Writers are limited to one letter per month. Deadline is 5 p.m. Fridays. Send letters for the *Belvidere Republican* to: Letters to the Editor, 130 South State Street, Suite 101, Belvidere, IL 61008, fax to 815-547-3045, or email bdrnews@rvpublishing.com





In my opinion

The need for Illinois to map its way to ‘fair’

Behind closed doors, something very important is happening in our democracy. I would suspect that aside from people who follow redistricting, many are unaware of both the process and outcome of redistricting. I do think everyone would argue for a “fair” process.

The United States Constitution says very little about redistricting, except for some limited references in Article 1, Section 2.

In the third paragraph of this Section, a process for enumerating the population of the states to determine the number of seats that each state would have in Congress is described this way: “Representatives and direct Taxes shall be apportioned among the several states which may be



By ROGER EDDY Contributor

included within this union, according to their respective numbers.”

Basically, this describes the census process that takes place every 10 years, and why states take census gathering so seriously.

The details surrounding redistricting have been the subject of discussion and debate for years. Several United States Supreme Court cases have determined that each state should handle redistricting and legislative maps that are therefore drawn differently in various states.

In Illinois, legislative redistricting is the subject of Section 3, Article 4 of our state Constitution.

The Illinois Constitution states that “(a) Legislative Districts shall be compact, contiguous and substantially equal in population. Representative Districts shall be compact, contiguous, and substantially equal in population. (b) In the year following each Federal decennial census year, the General Assembly by law shall redistrict the Legislative Districts and the Representative Districts.”

The General Assembly is constitutionally responsible for drawing our new legislative maps every 10 years, aligning with the census. This is true in most states. Legislation

is approved by a majority vote in each chamber and then signed into law, or vetoed, by the governor. Some states like Florida Maryland, Mississippi and North Carolina do not allow for the governor to veto the new maps.

Some states do use other processes like political commissions. Connecticut and Maine require a two-thirds majority after a map is drawn by a commission.

According to the Illinois Constitution, if Illinois does not have a map passed by the legislature and signed by the governor by June 30, then a Legislative Redistricting Commission is to be named by July 10 and that commission has until Aug. 10 to agree on a map.

The commission is made

up of eight individuals appointed by the four caucus leaders. Half of the appointees of this commission are to be non-members of the General Assembly and half are representatives and senators. Eventually, if there is not an agreement, the Illinois Supreme Court gets involved.

Right now, with a supermajority of Democrats in the Illinois Senate, plus a supermajority in the Illinois House and a Democrat governor in Illinois, it is highly unlikely that a commission will be needed. That does not mean that the map should not follow constitutional requirements of being compact, contiguous, and substantially equal in population. If not, the

proposal could still be taken to court.

The real question is whether the current system as described in the Illinois Constitution results in a fair map. When one party controls the entire process, there will ultimately be questions about the map being “fair”. New Illinois House Speaker Chris Welch probably captured the essence very well when he recently said that he was indeed in favor of “fair maps.” He then quickly added that his definition of a “fair map” might be different than yours.

I was introduced to the concept of map drawing in a real way in 2001 when I ran for local representative in a newly drawn map.

See FAIR, Page 6

Rebuild Illinois grants for local transportation projects

The Illinois Department of Transportation (IDOT) has announced that a third \$250 million installment is being made to counties, municipalities, and townships to address their transportation needs as part of the historic, bipartisan Rebuild Illinois capital program. The funding ensures the continued investment in local infrastructure to improve safety, enhance quality of life, and help sustain the economy across the state by rebuilding Illinois communities and putting people to work.

A total of \$1.5 billion spread out in six installments is being invested over three years to advance municipal, township, and

county projects across the state. Projects, which will be selected and managed locally with financial oversight by IDOT, include road and bridge improvements, traffic signal upgrades, new storm sewers and bike paths, sidewalk replacements, and other long-term maintenance needs.

The money allotted for Boone County agencies:

Boone County:	
\$315,482.19	
Belvidere Township:	\$44,064.92
Bonus Township:	\$24,718.24
Boone Township:	\$15,803.37
Caledonia Township:	\$15,384.51

Flora Township:	\$363,734.81
LeRoy Township:	\$21,333.42
Manchester Township:	\$22,080.57
Poplar Grove Township:	\$11,795.93
Spring Township:	\$33,146.33
Total:	\$217,437.87
Belvidere Municipality:	\$281,025.36
Caledonia Municipality:	\$2,163.85
Capron Municipality:	\$15,113.97
Poplar Grove Municipality:	\$55,172.58
Timberlane Municipality:	\$10,259.05
Total:	

The funding is in addition to the regular contributions through the state’s motor fuel tax formula, which already account for \$567 million to local governments in this fiscal year alone.

Passed in 2019, Rebuild Illinois is investing \$33.2 billion into the state’s ag-

ing transportation system, creating jobs and promoting economic growth. The landmark capital program is not only the largest capital program in state history, but also the first one that touches all modes of transportation: roads and bridges, transit, waterways, freight and passenger rail, aviation,

and bicycle and pedestrian accommodations.

As part of its current FY2021-26 Proposed Highway Improvement Program, IDOT is investing a total of \$21.3 billion to improve roads and bridges. Of that, \$4.7 billion is identified for the local transportation system.

Belvidere North High School athletic schedule

Thursday, April 15

4:30 p.m. - Girls Softball, Junior Varsity vs. Woodstock North, home at F/JV Softball Fields  
4:30 p.m. - Girls Softball, Varsity vs. Woodstock North, home at Softball Varsity Field  
4:30 p.m. - Boys Tennis, Varsity vs. DeKalb HS, away at DeKalb HS  
4:30 p.m. - Boys Tennis, Junior Varsity vs. DeKalb HS, home at North Tennis Courts  
5 p.m. - Girls Volleyball, Freshman vs. Boylan Catholic, away at Boylan Catholic  
5 p.m. - Boys Soccer, Junior Varsity vs. East, home at Milt Brown Stadium  
6 p.m. - Girls Volleyball, Junior Varsity vs. Boylan, away at Boylan  
6:30 p.m. - Boys Soccer, Varsity vs. East, home at Milt Brown Stadium  
7 p.m. - Girls Volleyball, Varsity vs. Boylan, away at Boylan

Friday, April 16

5 p.m. - Cheerleading, Junior Varsity vs. Auburn, home at Milt Brown Stadium  
5 p.m. - Boys Football, Sophomore vs. Auburn, home at Milt Brown Stadium  
7:15 p.m. - Boys Football, Varsity vs. Auburn, home at Milt Brown Stadium  
7:15 p.m. - Cheerleading, Varsity vs. Auburn, home at Milt Brown Stadium  
Saturday, April 17  
10 a.m. - Girls Volleyball,

Freshman vs. Harlem, home at Main Gym  
11 a.m. - Girls Volleyball, Junior Varsity vs. Harlem, home at Main Gym  
12 p.m. - Girls Volleyball, Varsity vs. Harlem, home at Main Gym  
1 p.m. - Girls Softball, Varsity vs. Sandburg, away at Marengo  
3 p.m. - Girls Softball, Varsity vs. Antioch, away at Marengo  
5 p.m. - Girls Softball, Varsity vs. Marengo, away at Marengo

Monday, April 19

4:30 p.m. - Girls Soccer, Freshman/Sophomore vs. Harlem, away at Harlem  
6 p.m. - Girls Volleyball, Varsity vs. Sterling, away at Sterling

Tuesday, April 20

4:30 p.m. - Boys Tennis, Junior Varsity vs. Rockford Christian, home at BNHS Tennis Courts  
4:30 p.m. - Boys Tennis, Varsity vs. Rockford Christian, home at BNHS Tennis Courts  
4:30 p.m. - Boys Tennis, Junior Varsity vs. Rockford Christian, home at BNHS Tennis Courts  
4:30 p.m. - Girls Softball, Freshman/Sophomore vs. Sycamore, away at Sycamore HS  
4:30 p.m. - Girls Softball, Varsity vs. Sycamore, home at Softball Varsity Field  
4:30 p.m. - Girls Softball, Junior Varsity vs. Sycamore, home at F/JV Softball Fields  
5 p.m. - Girls Volleyball, Freshman vs. Auburn, home

at Main Gym  
5 p.m. - Girls Soccer, Junior Varsity vs. Harlem, away at Harlem  
6 p.m. - Girls Volleyball, Junior Varsity vs. Auburn, home at Main Gym  
6:30 p.m. - Girls Soccer, Varsity vs. Harlem, away at Harlem  
7 p.m. - Girls Volleyball, Varsity vs. Auburn, home at Main Gym

Wednesday, April 21

5 p.m. - Boys Football, Freshman vs. Byron HS. Home at Football Practice Field

Thursday, April 22

4:30 p.m. - Girls Softball, Junior Varsity vs. Woodstock, away at Woodstock  
4:30 p.m. - Boys Tennis, Junior Varsity vs. Rochelle, away at Rochelle  
4:30 p.m. - Boys Tennis, Varsity vs. Rochelle, away at Rochelle  
4:30 p.m. - Girls Softball, Varsity vs. Woodstock, away at Woodstock  
5 p.m. - Girls Soccer, Junior Varsity vs. Hononegah, away at Hononegah  
5 p.m. - Girls Volleyball, Freshman vs. Freeport, home at Main Gym  
6 p.m. - Girls Volleyball, Junior Varsity vs. Freeport, home at Main Gym  
6:30 p.m. - Girls Soccer, Varsity vs. Hononegah, away at Hononegah  
7 p.m. - Girls Volleyball, Varsity vs. Freeport, Canceled

Thursday, April 15

5 p.m. - Girls Volleyball, Freshman vs. East, home at Melvin L. Brown Gymnasium  
6 p.m. - Girls Volleyball, Junior Varsity vs. East, home at Melvin L. Brown Gymnasium  
7 p.m. - Girls Volleyball, Varsity vs. East, home at Melvin L. Brown Gymnasium

Friday, April 16

4:30 p.m. - Boys Baseball, Varsity vs. Harvard, Home at Baseball Varsity Field  
6:30 p.m. - Boys Football, Varsity vs. Jefferson, away at Wyeth Stadium  
6:30 p.m. - Cheerleading, Varsity vs. Jefferson, away at Wyeth Stadium

Saturday, April 17

10 a.m. - Girls Volleyball, Freshman vs. Guilford, away at Guilford  
11 a.m. - Girls Volleyball, Junior Varsity vs. Guilford, away at Guilford  
12 p.m. - Girls Volleyball, Varsity vs. Guilford, away at Guilford

Monday, April 19

5 p.m. - Cheerleading, Junior Varsity vs. TBA, away at TBA  
5 p.m. - Boys Football, Freshman vs. TBA, away at TBA  
5 p.m. - Girls Soccer, Freshman/Sophomore vs. Hononegah, home at BHS Practice Field - West Soccer

Tuesday, April 20

4:30 p.m. - Girls Soccer, Varsity vs. Hononegah, home at BHS Practice Field - West Soccer  
4:30 p.m. - Boys Tennis, Junior Varsity vs. Marengo, home at BHS Tennis Courts  
4:30 p.m. - Boys Tennis, Varsity vs. Marengo, away at Marengo  
5 p.m. - Girls Volleyball, Freshman vs. Freeport, away at Freeport  
6 p.m. - Girls Volleyball, Junior Varsity vs. Freeport, away at Freeport  
6 p.m. - Girls Soccer, Junior Varsity vs. Hononegah, home at BHS Practice Field - West Soccer  
7 p.m. - Girls Volleyball,

Varsity vs. Freeport - Canceled

Wednesday, April 21

4:30 p.m. - Girls Softball, Junior Varsity vs. Sycamore, away at Sycamore  
4:30 p.m. - Girls Softball, Varsity vs. Sycamore, away at Sycamore  
4:30 p.m. - Boys Baseball, Junior Varsity vs. Hampshire, home at Baseball JV Field  
4:30 p.m. - Boys Baseball, Varsity vs. Hampshire, home at Baseball Varsity Field

Thursday, April 22

4:30 p.m. - Girls Soccer, Varsity vs. Jefferson, away at Jefferson  
5 p.m. - Girls Volleyball, Freshman vs. Hononegah, home at Melvin L. Brown Gymnasium  
6 p.m. - Girls Volleyball, Junior Varsity vs. Hononegah, home at Melvin L. Brown Gymnasium  
6:15 p.m. - Girls Soccer, Junior Varsity vs. Jefferson, away at Jefferson  
7 p.m. - Girls Volleyball, Varsity vs. Hononegah Sr. Parent Night, home at Melvin L. Brown Gymnasium

VERY LARGE PUBLIC AUCTION

SATURDAY, APRIL 17, 2021 • RUNNING TWO RINGS!

Lunch by: Relish the Dog • 9 A.M. • Comfort Station Available

LOCATION: Boone Co. Fairgrounds, 8847 IL Rt. 76, 1 mi. north of Belvidere. Located in the goat barn near south end. Plenty of parking!

TRACTOR, ELECT GOLF CART, GUNS, COINS, STERLING, ANTIQUES & COLLECTIBLES, HOUSEHOLD, FISHING ITEMS, CANOES, TOOLS & MISC. GUNS TO BE SOLD @ 11:00 A.M. ALL ILLINOIS GUN LAWS APPLY. PAPERWORK TO BE HANDLED BY RSM GUNS. TRACTOR & OUTSIDE ITEMS TO BE SOLD RIGHT AFTER GUNS.

OWNERS: G. Gessner, B. Roth, V. Erne & The Estates of O. Stover, L. Thompson, E. Knauss & S.A. Park.

TERMS: See website.

AUCTIONEERS NOTE: We will be following Health Dept. guidelines. Please wear a mask!!



LEE AUCTION SERVICE  
Belvidere, IL 61008 - Cell # 815-988-0249

AUCTIONEERS: LYLE LEE, IL State License #440.000200 / WI #2863-52 & ROGER MACKEBEN  
CLERKS & CASHIERS: LEE AUCTION SERVICE

Visit our website at [www.leeauctionservice.com](http://www.leeauctionservice.com) for terms and check out: AuctionLook.com or AuctionZip.com for pictures and more information.





By Nancy Kreith  
EXTENSION EDUCATOR  
ILLINOIS EXTENSION

Across Illinois, experienced gardeners are blocking dates on their calendars based on expected thaw dates and anticipated harvest times.

Hardy vegetables can be planted as soon as the ground can be worked. That typically occurs between mid-March and early April. The Illinois State Water Survey has local spring and fall frost-free dates at [bit.ly/3uIBQOe](http://bit.ly/3uIBQOe).

“Serious gardeners should take this information to heart,” says Nancy Kreith, a horticulture educator at University of Illinois Extension.

“Schedule your planting dates based on crop hardiness and days to maturity,” says Kreith, who works in Cook County. “Hardy vegetables can be planted in the spring, four to six weeks before the average frost-free date, which is when it’s 32 degrees or above.”

Since frost-free dates are averages and actual dates will vary each year, she recommends providing early plantings with some protection. One way is by planting one to two weeks later in the spring to avoid late season frost or, for a late harvest vegetable, plant one to two weeks early for protection against an early frost. Another option is to cover plants to protect against early or late season frosts.

A few popular hardy vegetables are Brussels sprouts, onions, and peas. Broccoli, cabbage, kale, leek, and spinach can be also planted again in late August to early September for a successful fall harvest

In Illinois, half-hardy vegetables such as carrots, lettuce, beets and cauliflower can typically be planted from late-March to early May. Most of these crops can be planted again in mid-July to early September. Potato and parsnip are the exception, and best planted in the spring.

“In addition to knowing when to plant these vegetables, it’s important to know how to select, plant, and harvest them,” says Kreith. “Root crops, the broccoli family and leafy greens each require special consideration.”

Root crops require well-drained soil with plenty of organic matter. Directly sow seeds one-quarter to one-half inch deep. Prepare a shallow trench and spread a pinch of seed along the row. Once seedlings are one to two inches tall, thin them to the correct spacing, typically one to four inches apart, depending on the vegetable. Harvest by pulling the plants from the ground and trimming off the tops when necessary. Beet tops can be eaten along with thinned out sprouts.

Crops in the broccoli family should be planted by direct seeding or by using transplants. Transplants are preferred with many Brassica crops as they establish faster and mature earlier. Harvest these crops at the right time by following instructions on the seed packet or plant label. For broccoli, cabbage, and cauliflower, harvest once the head forms. Timing is essential because vegetables can easily become over-mature; for example, when broccoli begins to flower. For kale and collards, continually harvesting the outer,

mature leaves allows for continual harvest from summer to fall.

With leafy greens, it is more economical to direct seed. Lettuce and Swiss chard can be transplanted, but spinach, mustard and turnip are best direct seeded. Consider planting in two-to-three-week intervals, which is called succession planting, to yield a more useable harvest over a longer period.

Most leafy greens are fast maturing. Leaves should be harvested when young and tender and can be harvested as baby leaves. Typically, lettuce and mustard are ready to harvest from seed in just 30 to 40 days. Harvest by cutting the whole plant or harvest individual, outer leaves.

Going into spring gardening, here are a few reminders about good practices:

- Prepare the soil well and fertilize as needed. Incorporate organic matter into the soil annually.
- Choose disease-resistant plants.
- Provide consistent moisture during germination period.
- Water deeply and less frequently when established, at least 1 inch per week.

Learn more about cover crops at the Illinois Extension’s Grow Your Garden podcast, and about growing vegetables at: [extension.illinois.edu/veggies](http://extension.illinois.edu/veggies).

**About Illinois Extension**

Illinois Extension leads public outreach for University of Illinois by translating research into action plans that allow Illinois families, businesses, and community leaders to solve problems, make informed decisions, and adapt to changes and opportunities.



NANCY KREITH PHOTO Rock Valley Publishing

**Hardy and half-hardy vegetables can be planted in Illinois in early April. Leafy greens such as kale and spinach can be planted early and again in late August for two harvests.**



BELVIDERE PARK DISTRICT PHOTO Rock Valley Publishing

**Restocking the park with trout**

250 pounds of trout were released into the Belvidere Park Millrace on Thursday, March 25. Depending on the size of the fish, that would be between 150 to 200 fish released into the park waters.

## Local student among graduates

The University of Wisconsin-Eau Claire awarded 38 degrees in January.

Local students who received degrees and their fields of study are:

**Belvidere:**

Delaney Grady, Arts and Sciences, Bachelor of Science, biology

### •Fair (Continued from page 5)

The 109th legislative district included all or parts of eight counties in east-central Illinois.

The counties included all of Crawford, Clark Cumberland and Lawrence, most of Edgar County, plus portions of Effingham, Wabash and Shelby. Only four of the counties were completely within the legislative district.

It is understandable that when attempting to draw a map that, except for highly populated counties, it might be necessary to split counties. However, several towns were split, including Effingham, Shelbyville and Mount Carmel. In Mount Carmel the map split the east and west sides of Cherry Street. This was not “fair” to the people, as many were confused as to who represented them.

No matter your definition of “fair”, surely we can do better. Many believe that the only

way to address this issue is to amend the state Constitution and require a process that would not allow for the legislature alone to determine who gets to vote for them. Count me among those people.

Getting a constitutional amendment on the ballot is very difficult, unless those in the majority agree to place an amendment on the ballot in much the same way the “fair tax” amendment was presented. Yes indeed, fair is fair.

Roger Eddy is a retired member of the Illinois House and served on the Special Investigative Committee on the impeachment of Rod Blagojevich. He served the 109th District as a Republican from 2003 to 2012. Recently, he authored a book highlighting the impeachment of Blagojevich, titled, “A Front Row Seat - The Impeachment of Rod Blagojevich.”

CLEARY

BUILDING CORP.

Serving our Clients since 1978

Build & Protect... It's What We Do!

Boats, Trucks, ATV's, Horses, Machinery, RV's, & Much More

Visit ClearyBuilding.com Today!

**Why Choose CLEARY?**

- Strongest Structure in the Industry
- DreamMaker 3D Design Software
- We Manufacture & Construct Our Product
- FABRAL Lifetime Steel Warranty
- Featuring  Doors
- Builders Risk & Full Insurance

Oregon, IL

815-732-9101



800-373-5550

ClearyBuilding.com

382320



Grow

MOREL MUSHROOMS

CREATE A MOREL GARDEN IN YOUR BACK YARD

We provide the seed and easy to use instructions for preparing an outdoor *Morel Habitat*.

You just sow the seed, maintain the *Morel Habitat*, and pick and enjoy pounds of fresh Morels

\$33.95 + \$8.65 S/H -- ORDER 707-829-7301

GOURMET MUSHROOMS

P.O. BOX 515 CN21 \* GRATON, CA 95444

[www.gmushrooms.org](http://www.gmushrooms.org)

Spawn Guaranteed to Produce

393742

Stillman

BANK

www.stillmanbank.com

A Heritage of Serving

Local Agriculture

Since 1882

- Machinery Loans
- Livestock Loans
- Lines of Credit
- Farm Improvement Loans
- Real Estate Loans
- Financial Planning
- Leasing

Member FDIC



383799



# Hittin' the Links

## Silver Ridge Golf Course offers casual golf, play days, lessons

Silver Ridge Golf Course in Oregon, Ill. can accommodate outings both big and small. Whether its a small outing of 12 with a few friends or a larger fundraising outing with 150 participants, Silver Ridge is ready to make your day run smoothly from golf to dining.

Our scenic 18-hole golf course is sure to offer plenty of enjoyment for the casual golfer but also plenty of challenge for your more serious golfers.

With two different banquet rooms and bar area Silver Ridge has more than enough space to accommodate both small and large outings comfortably. Let the staff at Silver Ridge handle the day so you can relax and en-

joy the day with everyone else.

Silver Ridge features the following amenities:

- 18 Hole Scenic Golf Course
- Bar Area
- Beverage Cart Available
- Driving Range
- Golf Instruction

Contact Head Golf Professional Shane Stuart for individual or group instruction for all ages and abilities.

### Pricing

\$30 - 30/40 min. Individual Adult Lesson

\$15 - 30/40 min. Junior Golf Lesson (Under 18)

Lesson packages available for multiple lessons

### Summer prices

Prices valid for 2021 Sea-

son

(May 26-Oct 8)

\*Prices subject to change

### Weekdays

9 Holes - \$12/\$10

18 Holes - \$17/ \$15

Twilight Golf after 3 p.m.

- \$20

\*Seniors take \$2 Off Green

Fees

### Weekends/Holidays

9 Holes - \$18/\$10

18 Holes - \$25/\$15

Twilight Golf after 1 p.m.

- \$25

\*Seniors take \$2 Off Green

Fees

Range Bag (Approx 50 Balls) - \$5

### Spring/fall prices

Prices Valid for 2021



SUBMITTED PHOTO Rock Valley Publishing

**Silver Ridge Golf Course offers casual golf, golf lessons, and can host your organization's next gold play day.**

Shoulder Seasons

(Opening Date - May 1)

(Oct. 15 - Closing Date)

\*Prices subject to change

### Fees Weekdays

9 Holes w/cart - \$25

18 Holes w/cart - \$36

9/18 Holes Walking - \$10

### Weekends

9 Holes w/cart - \$20

18 Holes w/cart - \$30

9/18 Holes Walking - \$15

Silver Ridge Golf Course

is located at 3069 North Hill

Road, Oregon, Ill.

For more information,

call 815-734-4440.

## Sunset Golf: Established in 1937 by local leaders



SUBMITTED PHOTO Rock Valley Publishing

**Looking for a new challenge? Take your game to Mt. Morris' Sunset Golf Course.**

Sunset Golf Course, home of the famous Lyle Towns Old Home Week 4th of July Scramble, was founded in 1937 by the Kable brothers and other prominent figures in the Mount Morris township. In 1990 the course layout changed with the addition of four holes, which now play as # 4, 5, 6, and 8.

The course's most well know attraction is the 7th hole which is a 100 yard par 3 that requires golfers to hit their shot over a giant ravine known by locals as the Pit. On the original course layout this played

as the final hole, but today it is the 7th. What seems like such a simple hole has played mind games with golfers for years. Even the best golfers have managed to ruin their rounds after challenging this hole.

### Daily green fees and specials

9 Holes - \$8

18 Holes - \$15

### Cart Rental

9 Holes - \$7

18 Holes - \$10

### Total

9 Holes - \$15

18 Holes - \$25  
Range Balls - \$4

### Specials

New member discount price - \$450 (Or more than 3 years removed)

Cost to Businesses or Organizations interested in hosting a Golf Outing at Sunset is \$25 per entry/golfer for 18 holes with a cart.

Sunset Golf Course is located at 216 Sunset Hill, Mt. Morris, Ill. For more information, call 815-734-4839

6734 N German Church Road  
Byron, IL  
(815) 234-4653  
prairieviewgolf.com

# Sculpted On an Ancient Prairie

6734 N German Church Road, Byron, IL  
prairiefiregolf.com | (815)234-FIRE (3473)

## RESERVE YOUR BAY TODAY!





**HIRING: FULL AND PART TIME  
SERVICE AND TIRE TECHNICIANS!**  
Brake, Alignment, Chassis Specialists  
*Come To The Roscoe Location To Interview*

**FF TIRE & WORLD AND SERVICE CENTER**

**OIL CHANGE SERVICE**

Standard **\$14<sup>88</sup>**  
Full Synthetic **\$59<sup>99</sup>**  
Includes Top Off Service

High Mileage **\$29<sup>99</sup>**  
Includes Synthetic Blend Motor Oil

Ask about a **FREE TIRE ROTATION!**

- Most vehicles
- Install new oil filter
- Refill up to 5 quarts motor oil (Additional quarts extra)
- Lubricate chassis (if applicable)
- \$3.00 disposal fee

Must present coupon at time of service.  
Not valid with any other offer. Expires 4/22/2021

**SHOCKS OR STRUTS**  
**\$20 OFF**  
ANY SET OF 4 SHOCKS OR STRUTS  
Installed in store recommended. 50,000 Miles

May not be combined with any other offer or coupon.  
Some services not available at all locations. Must redeem at time of purchase. Offer expires 4/22/2021

**COOPERTIRES**

**ALIGNMENT SPECIAL**  
**\$10 OFF**  
Most Vehicles

Must present coupon at time of service.  
Not valid with any other coupon or discount.  
See store for details. Expires 4/22/2021

**FF TIRE & WORLD AND SERVICE CENTER**

**ROTATE & BALANCE**  
**\$10 OFF**

INCLUDES: Inflate tires to proper pressure  
• Computer spin balance all 4 wheels • Includes 4-tire rotation  
• Mag wheels and some trucks extra • TPMS service extra

May not be combined with any other offer or coupon.  
Some services not available at all locations. Must redeem at time of purchase. Offer expires 4/22/2021

**COOPERTIRES**

**\$25 OFF**  
ANY SERVICE OF \$150 OR MORE

**FF TIRE & WORLD AND SERVICE CENTER**

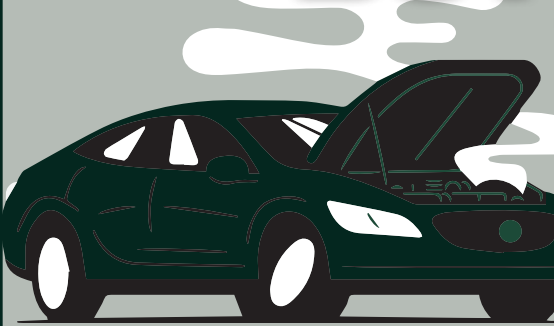
Must present coupon at time of service.  
Not valid with any other offer or tires. Expires 4/22/2021

**\$40 OFF**  
ANY SERVICE OF \$250 OR MORE

**FF TIRE & WORLD AND SERVICE CENTER**

Must present coupon at time of service.  
Not valid with any other offer or tires. Expires 4/22/2021

# NEED WORK ON YOUR VEHICLE BUT SHORT ON \$\$\$\$\$\$?



Now Available  
**snap!**  
finance

**NO CREDIT NEEDED!**

**0 INTEREST FOR 100 DAYS**

**APPROVAL UP TO \$3,000!**

**THE WORKS**  
**\$24<sup>95</sup>**  
Plus Disposal Fee & Sales Tax

- 1) Lube, Oil Change & FILTER (up to 5 quarts of 10w30 Motor Oil)
- 2) Check Fluid Levels & Top Off
  - A: Coolant in Reserve Tank & Condition
  - B: Power Steering Fluid & Condition
  - C: Fill Wash Fluid (REAL Wash Fluid)
  - D: Transmission Fluid Level & Condition of Fluid
  - E: Brake Fluid & Condition of Fluid
- 3) Inspect Belts & Hoses
- 4) Inspect Tires & Correct Air Pressure
- 5) Rotate Tires
- 6) Inspect Thickness of Brake Pads
- 7) Check Vehicle Charging System
  - A: Test Output of Alternator
  - B: Load Test The Battery
  - C: Check Condition of Battery Connections

- OFFER GOOD FOR MOST CARS •
- MINI VANS - LIGHT TRUCKS UP TO 1/2 TON •
- 3/4 - 1 TON TRUCKS - ADD \$10 •
- 5W20 - ADD \$2 • With Coupon •
- Not valid with any other offer •
- Expires 4/22/2021 •

**STORE SPECIAL**  
**PASSENGER TIRES**  
**\$40 OFF**

**COOPERTIRES**

Any New Set of Four CS5 GRAND TOURING OR CS5 ULTRA TOURING TIRES

May not be combined with any other offer or coupon. Some services not available at all locations. Must redeem at time of purchase. Offer expires 4/22/2021

**YOUR LOW PRICE TIRE STORE! WWW.FFTIREWORLD.COM**

**1983 PAWLISCH DRIVE  
CHERRYVALE MALL  
815-332-9445  
RIGHT NEXT TO WATER TOWER  
M-F 8 a.m.-5:30 p.m.; Sat. 8 a.m.-3 p.m.**



5257 SWANSON ROAD, ROSCOE  
2 MILES S. OF HONONEGAH ELEVATOR ON RT. 251  
M-F 8:00-5:30; SAT. 8:00-3:00  
**815-637-4055**

520 LOGAN AVENUE, BELVIDERE  
3 BLOCKS EAST OF BELVIDERE PARK  
M-F 8:00-5:30; SAT. 8:00-3:00  
**815-544-4452**

1610 ALPINE ROAD, ROCKFORD  
1 BLOCK SOUTH OF COLONIAL VILLAGE  
M-F 8:00-5:30; SAT. 8:00-3:00  
**815-398-7867**

5302 N. 2ND, LOVES PARK  
ACROSS FROM POPEYE'S  
M-F 8:00-5:30; SAT. 8:00-3:00  
**815-282-1177**





# ‘Money Smart Week’ offers financial information

Illinois Secretary of State Jesse White encourages consumers to participate in Money Smart Week, a weeklong free virtual event designed to help people manage their personal finances and avoid fraud.

“For many years, Money

Smart Week has brought financial literacy and has offered valuable information to children and adults during this event,” White said. “I urge Illinoisans to take advantage of these informative virtual events and get ‘money smart.’”

Money Smart Week, held from April 10 to April 17, has featured daily live events and select resources that cover topics such as budgeting, saving, student loans, personal finance and smart banking. Consumers will also learn how to manage their finances

and avoid fraud schemes. The week is coordinated by the Federal Reserve Bank and its Money Smart partners.

The Illinois Securities Department, a department of the Illinois Secretary of State’s Office, investigates investment fraud and works with

other government agencies to promote financial literacy and fraud awareness.

Additional information and

a calendar of the online events for this year’s Money Smart Week are available at [www.avoidthescam.net](http://www.avoidthescam.net).

## Woodstock Police report

The Woodstock Police department reported the following arrests and citations. Persons charged with domestic battery and juveniles 17 or younger are not named.

An arrest does not constitute a conviction, and suspects are considered innocent unless proven guilty in a court of law.

March 15, 9 p.m., 1700 block of Quail Court, Jose L. Urbina, 34, of Woodstock, was arrested for WOW (2 counts-FTA-McHenry County).

March 16, 6:35 p.m., 3000 block of Raffel Road, Brandy M. Brown, 31, of Wonder Lake, was arrested for DUI, DUI over 0.08, operating an uninsured motor vehicle, improper lane usage and resisting a peace officer.

March 18, 8:42 p.m., Route 120 and Route 47, Marie L. Salyers, 38, of Woodstock, was arrested for driving while license

revoked and expired registration.

March 19, 500 block of Washington Street, Devin J. Dean, 29, of Woodstock, was arrested for WOW (theft-Aurora PD) and WOW (FTA-Kendall County).

March 19, 12:40 p.m., 100 block of North Benton Street, a 50-year-old Woodstock female was arrested for domestic battery and battery.

March 19, 9:56 p.m., 200 block of North Benton Street, Michelle L. Ferguson, 40, of Woodstock, was arrested for DUI, DUI over 0.08, operating an uninsured motor vehicle and driving the wrong way on a one-way street.

March 20, 10:37 a.m., Country Club Road near Zimmerman Road, Florentino Rios, 20, of Lake in the Hills, was arrested for driving while license suspended and speeding.

March 20, 11:45 a.m., 1300

block of South Eastwood Drive, Victor O. Diaz, 25, of Woodstock, was arrested for driving while license revoked and electronic communication device.

March 31, 3:03 p.m., 100 block of South Jefferson Street, Manuel Mejia Ayala, 32, of Woodstock, was arrested for no valid driver’s license.

March 22, 8:28 p.m., 2000 block of South Eastwood Drive, Arturo Calderon, 45, of Crystal Lake, was arrested for aggravated DUI license revoked, DUI, DWLR, operating an uninsured motor vehicle, improper lane usage, resisting a peace officer and WOW (FTA-McHenry County).

March 24, 3:14 p.m., 600 block of Lake Avenue, Emily K. Slaten, 39, of Woodstock, was arrested for WOW (FTA-McHenry County).

March 26, 4:14 p.m., 1900 block of Charles Street,

Devin M. Goss, 23, of Woodstock, was arrested for WOW (FTA-McHenry County).

March 28, 7:47 p.m., North Seminary Avenue and Grove Street, Yin M. Win, 21, of West Allis, Wis., was arrested for driving while license suspended and speeding.

March 29, 9:38 a.m., Country Club Road near Zimmerman Road, Ismael Rodriguez, 20, of Woodstock, was arrested for speeding 26-42 mph over limit.

March 29, 11:54 a.m., 1900 bloc of Sheila Street, Kenneth J. Manning, 25, of Woodstock, was arrested for WOW (FTA-McHenry County).

March 30, 6:36 p.m., 300 block of West Calhoun Street, Isaiah R. Dunn-Vigo-Gomes, 26, of Woodstock, was arrested for no valid driver’s license, operating an uninsured motor vehicle and driving with no front registration plate.

## •Driving (Continued from front page)

and ticket anyone who violates distracted driving and other Illinois motor vehicle laws.”

In support of this effort, the Huntley Police Department is partnering with the Illinois Department of Transportation, the Illinois State Police and more than 200

local law enforcement agencies around

Illinois the entire month of April.

According to the National Highway Traffic Safety Administration, a total of 26,004 people died in U.S. crashes involving a distracted driver between 2012 and 2019.



# SHARE THE NEWS!

Email your news items to [mchenrynews@rvpublishing.com](mailto:mchenrynews@rvpublishing.com)

## McHenry County News

130 South State Street, Suite 101, Belvidere, IL 61008 — PUBLISHED WEEKLY —

General Manager .....	Sue Z. Lange	News .....	<a href="mailto:mchenrynews@rvpublishing.com">mchenrynews@rvpublishing.com</a>
Advertising Director .....	Vicki Vanderwerff	Advertising .....	Rhonda Marshall
Distribution/Circulation .....	Lindy Sweet		<a href="mailto:marshall@rvpublishing.com">marshall@rvpublishing.com</a>

### DEADLINES

News .....	Friday noon
Display Advertising .....	Friday noon
Legal Notices .....	Friday 4:30 p.m.
Classifieds .....	Monday noon

Published by: **Rock Valley Publishing LLC**

printed on recycled paper

392666



## SUPPORT THE BUSINESSES THAT SUPPORT YOU!

393048

# Learn about possible **free tuition** for your first year!



Learn more at a virtual information session in April. RSVP for a session at [RockValleyCollege.edu/ATC](http://RockValleyCollege.edu/ATC).

## ADVANCED TECHNOLOGY CENTER

RockValleyCollege



393006



# Hittin' the Links

cont.

## PrairieFire Golf & Grill: Fun within range



SUBMITTED PHOTO Rock Valley Publishing  
The eight outdoor hitting bays are equipped with heaters, a fire table, TVs, and lounge furniture.

Take a short drive south of Rockford for a new and exciting way to experience golf at PrairieFire Golf & Grill in Byron! Located behind the clubhouse at PrairieView Golf Club, PrairieFire is a driving range facility featuring Toptracer Range® technology. The same ball tracing technology as seen on many PGA tournament TV broadcasts.

"We envisioned a place where golfers can play and compete year-round, day or

night, while also attracting new or non-traditional golfers for the entertainment value," said Scott deOliveira, General Manager of PrairieView and PrairieFire.

Golf at PrairieFire combines live golf shots with the virtual games of Toptracer that are entertaining for people of all ages and abilities. Toptracer offers game modes including points game, long drive, closest to the pin, virtual courses, and more.

The eight outdoor hitting bays are equipped with heaters,

a fire table, TVs, and lounge furniture. The interior of PrairieFire has a modern, earthy feel with a custom-made coppertop bar and additional lounge areas.

"PrairieFire is a great place for everything from a date night to small gatherings of family and friends," said Nick Schoenhard, PrairieFire Manager. "In addition to traditional golfers, we see a lot of birthday parties, bachelor/bachelorette parties, and small company events at PrairieFire."

The menu at PrairieFire includes sharable items such as sliders, traditional apps, and signature items such as loaded PrairieFire fries and Bison Bites. The bar features an extensive selection of beer, wine, and spirits.

"When coming to play with friends and family, we really felt the food and drinks should complement the activity and atmosphere," said Schoenhard.

To learn more about PrairieFire or reserve a bay online, visit [prairiefiregolf.com](http://prairiefiregolf.com).

## Experience Timber Pointe Golf Club: The pride of Boone County

Welcome to Timber Pointe Golf Club in Poplar Grove, located just 20 minutes east of Rockford, Ill., minutes off I-90. Our expertly conditioned 18-Hole Championship Golf Course challenges golfers of all skill levels, offering fun, exciting, and very affordable golf for players of all abilities.

Timber Pointe features a practice range with grass tees, a private instruction tee with accurate distance markers, a large putting green, separate chipping and putting greens, two practice bunkers, and four target greens measured at the same distances as our Par 3 holes...a unique feature not seen anywhere within the Rockford golf scene. Add to that our fully stocked golf shop and the best food and bar of any Northern Illinois public golf course...and you'll quickly understand why so many golfers call us "home."

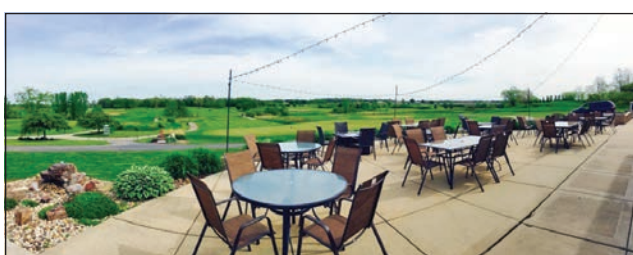
### A championship layout to remember

The Par 72 Course at Timber Pointe measures over 7000 yards from the tips, but it's certainly a great deal more than that. Sure we can challenge even the best golfers in the Illinois, but what we're know for is a round of golf you're sure to remember. It all starts with great conditions, a friendly staff attitude, and a playable course layout that if fun and challenging for anyone, regardless of age, skill level, and other factors.

A round of golf at Timber Pointe is also one of the most affordable you'll find anywhere around Rockford or Chicago-land. It's well worth the drive...and you'll quickly see why hundreds of golfers make Timber Pointe their home away from home.

### Just some of the features you'll experience include:

- Five sets of tees on each hole



- 4,915 yards all the way back to 7,020+
- Spaciously drawn out on 160 acres
- Bent grass tees and greens
- Low-mow bluegrass fairways
- Double-row irrigation system
- 40 acres of established timber
- 50 uniquely shaped bunkers
- Exciting changes in elevation
- Clever mounding in fairways and roughs
- Four areas of water including a wildlife pond with cattails
- Three desert style waste bunkers similar to those found in the Southwest
- A waterway that divides fairways and meanders in front of greens and tees

- Country setting with prairie grasses, native grasses, and wildflowers

### Rain checks

When you play Timber Pointe and rain, lightning, or a severe weather warning (not a watch) forces you off the course, we'll give you a Risk-Free, Full Value Rain-Check, no questions asked.

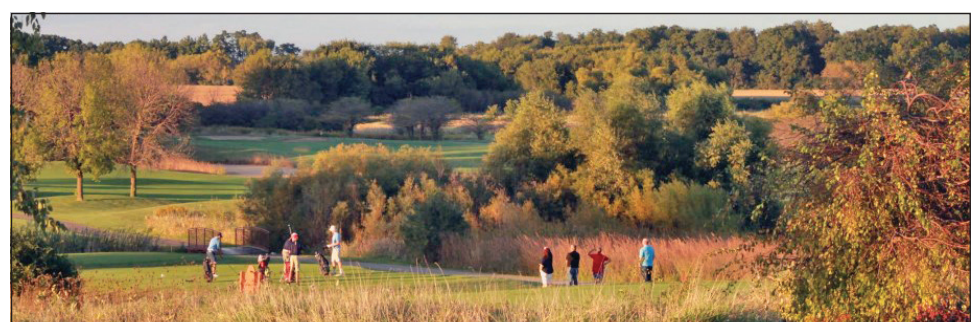
On a day where rain is predicted, but you look outside and see nothing but sun and blue skies, come on out and play. If the weather turns against you, we have you covered just the same.

The Risk Free, Full Value Rain Check is not available for group events or golf outings. The rain check is good until the end of the current season. Another way we're making a great game better.



18 Holes w/Cart  
Weekdays - \$28  
Weekends - \$36

3069 N Hill Rd.  
(815) 734-4440  
[Silverridgegolf.com](http://Silverridgegolf.com)



SUBMITTED PHOTOS Rock Valley Publishing

Above: Timber Pointe's 18-Hole Championship Golf Course challenges golfers of all skill levels, offering fun, exciting, and very affordable golf for players of all abilities. Above left: The Timber Pointe clubhouse boasts panoramic views atop a "pointe," the highest point in all of Boone County, as a matter of fact. Our contemporary and up-to-date clubhouse fits 90 people comfortably and opens to an outdoor patio and firepit area overlooking the golf course. Directly adjacent, our covered special event tent (seasonal) can host events for up to 175+.

19th Anniversary  
Membership Special!

Unlimited golf for three years  
for only \$49 per year.

\$49\*  
per year  
(plus \$10/year admin fee)

Available for a very  
limited amount of time.

CALL US TODAY!

(815) 544-1935  
5750 Woodstock Rd.  
Poplar Grove, IL  
[www.golfthepointe.com](http://www.golfthepointe.com)

Membership is unlimited  
green fees for 3 years.

Share this offer with  
your golfing friends.

\*Unlimited golf 7  
days per week.

NO CATCH!  
Just great golf at  
a great price.



• 9 Hole Golf Course • Watered Fairways  
 • Driving Ranges • Pro Shop • Snack Bar  
 • Rental Carts • Open to the Public  
 • Memberships Available

2021 SEASON

**FREE GREEN FEES**  
Valid any day except Thursday, call for tee time. Cart rental required.

9 Holes \$15 (includes cart) • 18 Holes \$25 (includes cart)

216 Sunset Hill, Mt. Morris, IL  
815-734-4839 • [www.sunsetgolfmm.com](http://www.sunsetgolfmm.com)



STATE OF ILLINOIS  
IN THE CIRCUIT  
COURT OF THE 17TH  
JUDICIAL CIRCUIT  
COUNTY OF BOONE  
IN RE THE  
MARRIAGE OF:  
DAVID J. SCHULTZ,  
Petitioner,  
Vs,  
ALOMA RENEE  
SCHULTZ,  
Respondent.  
NO. 2020 D 142  
PUBLICATION NOTICE  
The requisite affidavit  
for publication have been  
filed, Notice is hereby given  
you, ALOMA RENEE  
SCHULTZ, Respondent,  
in the above-entitled suit,  
that the above suit has been  
commenced in the Circuit  
Court of the 17th Judicial  
Circuit, Boone County, Il-  
linois, by said Petitioner  
against you praying for a  
dissolution of marriage;  
that Summons was duly  
issued out of said Court  
against you as provided by  
law; and that said suit is  
still pending.  
NOW THEREFORE,  
unless you ALOMA RE-  
NEE SCHULTZ, the said  
Respondent, file your Re-  
sponse to the Petition in  
said suit or otherwise make  
your appearance therein  
the said Circuit Court of  
the 17th Judicial Circuit,  
Boone County, Illinois on  
or before the 14th day of  
May, 2021, default may be  
entered in accordance with  
the prayer of the said Peti-  
tion.  
Linda Anderson  
Circuit Clerk  
Attorney Russell J.  
Luchtenburg  
130 South State Street,  
#303  
Belvidere, Illinois 61008  
815/547-5588  
Russell6951@gmail.com  
(Published in the  
Belvidere Republican  
April 1, 8 & 15, 2021)  
392997

IN THE CIRCUIT  
COURT OF THE 22ND  
JUDICIAL CIRCUIT  
MCHENRY COUNTY  
- WOODSTOCK,  
ILLINOIS  
DEUTSCHE BANK  
NATIONAL TRUST  
COMPANY AS  
TRUSTEE FOR ARGENT  
SECURITIES INC.;  
ASSET BACKED  
PASS THROUGH  
CERTIFICATES SERIES  
2006-W1;  
Plaintiff,  
vs.  
FREDOLIN G.  
MENESES; RUTH  
ALMA MENESES;  
BOULDER RIDGE  
FAIRWAY HOMES  
PROPERTY OWNERS’  
ASSOCIATION;  
BOULDER RIDGE  
GREENS PROPERTY  
OWENRS’  
ASSOCIATION;  
BOULDER RIDGE  
PROPERTY  
ASSOCIATION;  
BOULDER RIDGE  
PROPERTY OWNERS’  
ASSOCIATION FKA  
BOULDER RIDGE  
COUNTRY CLUB  
PROPERTY OWNERS’  
ASSOCIATION;  
FAIRWAY HOMES

ASSOCIATION;  
HOUSEHOLD FINANCE  
CORPORATION  
III; UNKNOWN  
OWNERS AND  
NONRECORD  
CLAIMANTS;  
Defendants,  
18 CH 821  
NOTICE OF SALE  
PUBLIC NOTICE IS  
HEREBY GIVEN that  
pursuant to a Judgment of  
Foreclosure and Sale entered  
in the above entitled  
cause Intercounty Judicial  
Sales Corporation will on  
Thursday, May 6, 2021 at  
the hour of 10:30 a.m. in  
the conference room, 970  
McHenry Avenue, Crystal  
Lake, Illinois 60014, sell at  
public auction to the high-  
est bidder for cash, as set  
forth below, the following  
described mortgaged real  
estate:  
PARCEL 1: LOT 160 IN  
THE GREENS AT BOUL-  
DER RIDGE, BEING A  
SUBDIVISION OF PART  
OF THE SOUTHEAST  
1/4 OF SECTION 24,  
TOWNSHIP 43 NORTH,  
RANGE 7 EAST OF THE  
THIRD PRINCIPAL ME-  
RIDIAN, AND PART OF  
THE SOUTHWEST 1/4  
OF SECTION 19, TOWN-  
SHIP 43 NORTH, RANGE  
8 EAST OF THE THIRD  
PRINCIPAL MERIDI-  
AN, ACCORDING TO  
THE PLAT THEREOF  
RECORDED DECEM-  
BER 27, 1994 AS DOC-  
UMENT NO. 94R70732,  
IN MCHENRY COUN-  
TY, ILLINOIS. PARCEL  
2: EASEMENT FOR IN-  
GRESS AND EGRESS  
OVER THE COMMON  
AREAS AS DEFINED  
IN DECLARATION OF  
COVENANTS, CON-  
DITIONS AND RE-  
STRICTIONS FOR THE  
GREENS OF BOUL-  
DER RIDGE RECORD-  
ED JANUARY 26, 1995  
AS DOCUMENT NO.  
95R2853, AND OVER  
ALL ROADS IN THE  
GREENS OF BOULDER  
RIDGE SUBDIVISION,  
RECORDED DECEM-  
BER 27, 1994 AS DOC-  
UMENT NO. 94R70732.  
SITUATED IN THE  
COUNTY OF MCHENRY  
AND STATE OF ILLI-  
NOIS. P.I.N. 19-19-303-  
026.  
Commonly known as 10  
Laurel Valley Court, Lake  
in the Hills, IL 60156.  
The mortgaged real estate  
is improved with a single  
family residence. If the  
subject mortgaged real es-  
tate is a unit of a common  
interest community, the  
purchaser of the unit other  
than a mortgagee shall pay  
the assessments required  
by subsection (g-1) of Sec-  
tion 18.5 of the Condo-  
minium Property Act.  
Sale terms: 10% down  
by certified funds, balance,  
by certified funds, within  
24 hours. No refunds. The  
property will NOT be open  
for inspection. Prospective  
bidders are admonished to  
check the court file to veri-  
fy all information.  
For information call Law  
Clerk at Plaintiff’s Attor-  
ney, The Wirbicki Law  
Group, 33 West Monroe

Street, Chicago, Illinois  
60603. (312) 360-9455.  
W18-1913  
INTERCOUNTY  
JUDICIAL SALES  
CORPORATION  
intercountyjudicialsales.  
com  
I3166208  
(Published in the  
McHenry County News  
April 1, 8 & 15, 2021)  
392701  
IN THE CIRCUIT  
COURT OF THE 22ND  
JUDICIAL CIRCUIT  
MCHENRY COUNTY  
- WOODSTOCK,  
ILLINOIS  
WELLS FARGO BANK,  
N.A.;  
Plaintiff,  
vs.  
UNKNOWN HEIRS  
AND LEGATEES OF  
RICHARD L. PERRY  
AKA RICHARD PERRY,  
DECEASED; CITY OF  
HARVARD; UNKNOWN  
OWNERS AND NON  
RECORD CLAIMANTS;  
STEVE PERRY; JOEL  
KNOSHER, AS SPECIAL  
REPRESENTATIVE FOR  
RICHARD L. PERRY  
AKA RICHARD PERRY,  
DECEASED;  
Defendants,

19 CH 585  
NOTICE OF SALE  
PUBLIC NOTICE IS  
HEREBY GIVEN that  
pursuant to a Judgment of  
Foreclosure and Sale entered  
in the above entitled  
cause Intercounty Judicial  
Sales Corporation will on  
Thursday, May 13, 2021 at  
the hour of 10:30 a.m. in  
the conference room, 970  
McHenry Avenue, Crystal  
Lake, Illinois 60014, sell at  
public auction to the high-  
est bidder for cash, as set  
forth below, the following  
described mortgaged real  
estate:  
The South 60 feet of Lot  
6 in Block 8 in Hart’s First  
Addition to Harvard a Sub-  
division of part of the East  
1/2 of the Southeast 1/4 of  
Section 35, Township 46  
North, Range 5 East of The  
Third Principal Meridian,  
according to the plat there-  
of recorded November 6,  
1857 in Book 17 of Deeds,  
Page 561, in Mchenry  
County, Illinois. P.I.N. 01-  
35-477-003.  
Commonly known as 109  
North Hart Street, Harvard,  
IL 60033.  
The mortgaged real estate  
is improved with a single  
family residence. If the  
subject mortgaged real es-  
tate is a unit of a common  
interest community, the  
purchaser of the unit other  
than a mortgagee shall pay  
the assessments required  
by subsection (g-1) of Sec-  
tion 18.5 of the Condo-  
minium Property Act.  
Sale terms: 10% down  
by certified funds, balance,  
by certified funds, within  
24 hours. No refunds. The  
property will NOT be open  
for inspection. Prospective  
bidders are admonished to  
check the court file to veri-  
fy all information.  
For information call Sales  
Department at Plaintiff’s  
Attorney, Manley Deas  
Kochalski, LLC, One East  
Wacker Drive, Chicago,

Illinois 60601. (614) 220-  
5611. 19-033807  
INTERCOUNTY  
JUDICIAL SALES  
CORPORATION  
intercountyjudicialsales.  
com  
I3166645  
(Published in the  
McHenry County News  
April 8, 15 & 22, 2021)  
393199  
IN THE CIRCUIT  
COURT OF THE 17TH  
JUDICIAL CIRCUIT  
COUNTY OF BOONE -  
BELVIDERE, ILLINOIS  
PNC BANK, NATIONAL  
ASSOCIATION;  
Plaintiff,  
vs.  
UNKNOWN HEIRS  
AND LEGATEES OF  
BARBARA A. BLAND  
AKA BARBARA BLAND  
AKA BARBARA ANN  
BLAND; KATHERINE  
KIRANE AKA  
KATHY KIRANE;  
KENNETH ZENTNER  
AKA KENNETH L.  
ZENTNER; DONALD  
BLAND AKA DONALD  
BLAND JR. AKA  
DONALD L. BLAND;  
TIMOTHY A. MILLER  
AS SPECIAL  
REPRESENTATIVE FOR  
BARBARA A. BLAND;  
UNKNOWN OWNERS  
AND NON RECORD  
CLAIMANTS;  
Defendants,

20 CH 60  
NOTICE OF SALE  
PUBLIC NOTICE is  
hereby given that pursuant  
to a Judgment of Foreclo-  
sure entered in the above  
entitled cause Intercounty  
Judicial Sales Corporation  
will on Thursday, May 13,  
2021, at the hour of 12:15  
p.m. in the office of inside  
the front entrance of the,  
Boone County Courthouse,  
601 North Main Street,,  
Belvidere, Illinois 61008,  
sell to the highest bidder  
for cash, the following de-  
scribed mortgaged real es-  
tate:  
LOT EIGHT (8) IN  
BLOCK ONE (1) IN GIL-  
MAN’S FIFTH ADDI-  
TION TO BELVIDERE,  
AS PLATTED AND RE-  
CORDED IN THE RE-  
CORDER’S OFFICE OF  
BOONE COUNTY, IL-  
LINOIS, IN BOOK 47  
OF DEEDS AT PAGE  
208; SITUATED IN THE  
COUNTY OF BOONE  
AND STATE OF ILLI-  
NOIS. P.I.N. 05-25-381-  
006.  
Commonly known as 511  
Julien Street, Belvidere, Il-  
linois 61008.  
The improvement on the  
property consists of a sin-  
gle family residence. If the  
subject mortgaged real es-  
tate is a unit of a common  
interest community, the  
purchaser of the unit other  
than a mortgagee shall pay  
the assessments required  
by subsection (g-1) of Sec-  
tion 18.5 of the Condo-  
minium Property Act.  
Sale terms: 10% down  
by certified funds, balance  
within 24 hours, by certi-  
fied funds. No refunds. The  
property will NOT be open  
for inspection.  
For information call  
The Sales Department at

Plaintiff’s Attorney, An-  
selmo Lindberg & Asso-  
ciates, LLC, 1771 West  
Diehl Road, Naperville,  
Illinois 60563-1890. (630)  
453-6960. File Number  
F20080019  
INTERCOUNTY JUDI-  
CIAL SALES CORPORA-  
TION  
intercountyjudicialsales.  
com  
I3166648  
(Published in the  
Belvidere Republican  
April 8, 15 & 22, 2021)  
393191  
ASSUMED NAME  
CERTIFICATE OF  
INTENTION  
STATE OF ILLINOIS  
ss.  
County of Boone  
This is to certify that the  
undersigned intend...to  
conduct and transact a on-  
line sales clothing, jewelry  
business in said County  
and State under the name  
of ME BOUTIQUE at the  
following post office ad-  
dresses: 908 W. 12th Street,  
Belvidere, IL 61008 that  
the true and real full names  
of all persons owning, con-  
ducting or transacting such  
business, with the respec-  
tive residence address of  
each are as follows:  
Evarista Torres, 908 W.  
12th Street, Belvidere, IL  
61008.  
SIGNED:  
EVARISTA TORRES  
Dated 3/31/2021  
Subscribed and sworn (or  
affirmed) to before me, this  
31st day of March, A.D.  
2021.  
JULIE A. BLISS  
COUNTY CLERK  
By K. DREWCOOK  
DEPUTY  
(OFFICIAL SEAL)  
(Published in the  
Belvidere Republican  
April 8, 15, 22, 2021)  
393389

STATE OF ILLINOIS  
IN THE CIRCUIT  
COURT OF THE 17TH  
JUDICIAL CIRCUIT  
COUNTY OF BOONE  
In the Matter of  
the Estate of  
DOLORES V. LEJCAR,  
deceased  
No. 2021-P-19  
CLAIM NOTICE AND  
NOTICE TO UNKNOWN  
HEIRS  
Notice is given of the  
death of DOLORES V.  
LEJCAR, of Belvidere,  
Illinois on December 29,  
2019. Letters of office were  
issued on March 24, 2021,  
to MIDLAND STATES  
BANK as successor in in-  
terest to Alpine State Bank  
and Trust Co., 600 S. State  
Street, Belvidere, Illinois  
61008, as independent ex-  
ecutor, whose attorney is  
TOBIN & RAMON, 530  
South State Street; Suite  
200, Belvidere, IL 61008-  
3711.  
NOTICE is given to un-  
known heirs at law, if any,  
and whose names or ad-  
dresses are not stated in the  
petition that an order was  
entered by the Court on  
March 24, 2021, admitting  
the will to probate.  
The estate will be ad-  
ministered without court  
supervision, unless under

5/28-4 of the Probate Act  
(755 ILCS 5/28-4), an in-  
terested person terminates  
independent administra-  
tion at any time by mailing  
or delivering a petition to  
terminate to the clerk.  
Claims against the estate  
may be filed in the Office  
of the Boone County Cir-  
cuit Clerk - Probate Divi-  
sion at the Boone County  
Courthouse, at 601 North  
Main Street, Belvidere,  
IL 61008, or with the rep-  
resentative, or both, on or  
before October 18, 2021,  
which date is not less than  
six (6) months from the  
date of the first publication  
of this notice or, if mail-  
ing or delivery of a notice  
from the representative is  
required by section 5/18-3  
of the Probate Act, the date  
stated in that notice. Any  
claim not filed on or before  
that date is barred. Copies  
of any claim filed with the  
Clerk must be mailed or  
delivered to the represen-  
tative and to the attorney  
within 10 days after it has  
been filed.  
DATED: April 8, 2021.  
MIDLAND STATES  
BANK as successor  
in interest to Alpine State  
Bank and Trust Co.,  
Independent Executor  
Tobin & Ramon  
Attorneys for Petitioner  
530 South State Street;  
Suite 200  
Belvidere, IL 61008-3711  
(815) 544-0316  
mail@tobinramon.com  
(Published in the  
Belvidere Republican  
April 15, 22 & 29, 2021)  
393802  
IN THE CIRCUIT  
COURT OF THE TWEN-  
TY SECOND JUDICIAL  
CIRCUIT  
MCHENRY COUNTY,  
ILLINOIS  
MCHENRY SAVINGS  
BANK,  
Plaintiff,  
v.  
GRAND PRIX, INC.,  
MICHAEL J. FLEMING,  
and HOME STATE BANK  
as Trustee On Behalf Of  
Trust Agreement Dated  
October 1, 1997,  
Known As Trust Number  
4599, UNKNOWN  
OWNERS and NON-  
RECORD CLAIMANTS,  
Defendants.  
20 CH 000229  
Property Address: 4002  
Main Street, McHenry, Il-  
linois 60050  
NOTICE OF SHERIFF’S  
FORECLOSURE SALE  
PUBLIC NOTICE is  
hereby given that pursuant  
to a Judgment of Foreclo-  
sure and Sale entered in  
the above-entitled cause  
on February 24, 2021,  
Bill Prim, the Sheriff of  
McHenry County, Illi-  
nois, or his deputy, will on  
Thursday, May 20, 2021, at  
the hour of 10:00 a.m., at  
the McHenry County Gov-  
ernment Center, 2200 N.  
Seminary Avenue, Room  
262, Woodstock, IL 60098,  
sell at public auction to the  
highest and best bidder(s)  
for cash, the following de-  
scribed real estate:  
THAT PART OF THE  
SOUTHWEST QUAR-  
Continued on next page



# LEGAL NOTICES

Continued from previous page

TER OF THE SOUTH-  
WEST QUARTER OF  
SECTION 26 TOWNSHIP  
45 NORTH RANGE 8  
EAST OF THE THIRD  
PRINCIPAL MERIDIAN  
DESCRIBED AS FOL-  
LOWS: BEGINNING AT  
THE SOUTHWESTERLY  
CORNER OF THE CEN-  
TER PARCEL OF LAND  
CONVEYED BY THE  
CHICAGO AND NORTH-  
WESTERN RAILWAY  
COMPANY TO THE  
CITY OF MCHENRY,  
BY DEED DATED JULY  
22, 1958 RECORDED  
AS DOCUMENT NO.  
34214, ON AUGUST 25,  
1958; THENCE NORTH  
ALONG THE WEST  
LINE OF SAID CEN-  
TER PARCEL SO CON-  
VEYED TO THE CITY  
OF MCHENRY, A DIS-  
TANCE OF 326 FEET;  
THENCE WEST ALONG  
A WESTERLY EXTEN-  
SION OF THE NORTH  
LINE OF THE PARCEL  
CONVEYED TO THE  
CITY OF MCHENRY,  
TO THE SOUTHWEST  
CORNER OF LOT 9  
OF BLOCK 3 OF THE  
COUNTY CLERKS PLAT  
OF WEST MCHENRY,  
SAID PLAT BEING RE-  
CORDED IN BOOK 2  
OF PLATS, PAGE 39, IN  
THE OFFICE OF THE  
REGISTRAR OF DEEDS,  
IN AND FOR MCHEN-  
RY COUNTY; THENCE  
SOUTHEASTERLY IN A  
STRAIGHT LINE TO A  
POINT IN THE CENTER  
LINE OF MAIN STREET  
AS SAID MAIN STREET  
IS NOW LOCATED AND  
ESTABLISHED, A DIS-  
TANCE 9 FEET EAST-  
ERLY AS MEASURED  
PERPENDICULARLY  
FROM THE CENTER  
LINE OF THE CHICA-  
GO & NORTHWESTERN  
RAILWAY COMPANY'S  
ICC TRACT NO. 113;  
THENCE EASTERLY  
ALONG SAID CENTER  
LINE OF MAIN STREET  
TO THE POINT OF BE-  
GINNING, IN MCHEN-  
RY COUNTY ILLINOIS.  
(EXCEPTING THERE-  
FROM THE FOLLOW-  
ING PARCEL OF LAND  
DESCRIBED AS FOL-  
LOWS:  
THAT PART OF THE  
SOUTHWEST QUAR-  
TER OF THE SOUTH-  
WEST QUARTER OF  
SECTION 26, TOWN-  
SHIP 45 NORTH, RANGE  
8 EAST OF THE THIRD  
PRINCIPAL MERIDIAN,  
DESCRIBED AS FOL-  
LOWS, TO WIT:  
COMMENCING AT  
THE SOUTHWESTER-  
LY CORNER OF THAT  
CERTAIN PARCEL OF  
LAND CONVEYED BY  
THE CHICAGO AND  
NORTHWESTERN  
RAILWAY COMPA-  
NY, TO THE CITY OF  
MCHENRY BY DEED  
DATED JULY 22, 1958,  
RECORDED AS DOCU-  
MENT NO. 34214 AU-  
GUST 25, 1958; THENCE  
NORTH 05 DEGREES 25  
MINUTES 55 SECONDS  
WEST (BEARING AS-  
SUMED) ALONG THE  
WEST LINE OF SAID

CERTAIN PARCEL SO  
CONVEYED TO THE  
CITY OF MCHENRY, A  
DISTANCE OF 178.75  
FEET FOR A POINT OF  
BEGINNING; THENCE  
CONTINUING NORTH  
05 DEGREES, 25 MIN-  
UTES 55 SECONDS  
WEST ALONG SAID  
WEST LINE, A DIS-  
TANCE OF 187.72 FEET,  
MORE OR LESS TO THE  
SOUTHERLY LINE OF  
ILLINOIS STATE ROUTE  
120 (ELM STREET)  
(WAUKEGAN ROAD),  
AS CURRENTLY MON-  
UMENTED; THENCE  
NORTH 69 DEGREES  
28 MINUTES 50 SEC-  
ONDS EAST ALONG  
THE SOUTHERLY LINE  
OF ILLINOIS STATE  
ROUTE 120, A DIS-  
TANCE OF 130.47 FEET,  
TO THE EASTERLY  
LINE OF THE CHICAGO  
AND NORTHWESTERN  
RAILWAY COMPANY  
RIGHT OF WAY AS CUR-  
RENTLY MONUMENT-  
ED; THENCE SOUTH 06  
DEGREES 08 MINUTES  
21 SECONDS EAST,  
ALONG THE EASTER-  
LY LINE OF SAID RAIL-  
WAY RIGHT OF WAY,  
A DISTANCE OF 112.2  
FEET TO AN ANGLE  
POINT IN SAID RIGHT  
OF WAY; THENCE  
SOUTH 09 DEGREES 24  
MINUTES 14 SECONDS  
EAST A DISTANCE OF  
132.49 FEET; THENCE  
NORTH 84 DEGREES 34  
MINUTES 05 SECONDS  
EAST A DISTANCE OF  
106.72 FEET, TO THE  
POINT OF BEGINNING,  
IN MCHENRY COUNTY,  
ILLINOIS.)  
Commonly Known as:  
4002 Main Street, McHen-  
ry, Illinois  
PIN: 09-26-354-032  
The total Judgment on the  
property is: \$122,483.15.  
The property consists of a  
commercial building.  
Terms of Sale: Ten per-  
cent (10%) due by cash or  
certified funds at the time  
of sale and the balance is  
due within 24 hours of the  
sale; plus, for residential  
real estate, a statutory ju-  
dicial sale fee calculated at  
the rate of \$1.00 for each  
\$1,000 or fraction thereof  
of the amount paid by the  
purchaser to the person  
conducting the sale, not  
to exceed \$300.00, for de-  
posit into the Abandoned  
Residential Property Mun-  
icipal Relativity Relief Fund.  
No judicial sale fee shall  
be paid by the mortgagee  
acquiring the residential  
real estate pursuant to its  
credit bid at the sale or by  
any mortgagee, judgment  
creditor, or other lienor ac-  
quiring the residential real  
estate whose rights in and  
to the residential real estate  
arose prior to the sale. All  
payments shall be made  
in cash or certified funds  
payable to the Sheriff of  
McHenry County. The  
subject property is subject  
to real estate taxes, spe-  
cial assessments or special  
taxes levied against said  
real estate and is offered  
for sale without any rep-  
resentation as to quality of  
title and without recourse

to Plaintiff and in "As Is"  
condition. The sale is fur-  
ther subject to confirma-  
tion by the court.  
In the event the property  
is a condominium, in ac-  
cordance with 735 ILCS 5/15-  
1507(c)(1)(H-1) and (H-2),  
765 ILCS 605/9(g)(5), and  
765 ILCS 605/18.5(g-1),  
you are hereby notified that  
the purchaser of the unit,  
other than a mortgagee,  
shall pay the assessments  
and legal fees required by  
subdivisions (g)(1) and (g)  
(4) of Section 9 and the  
assessments required by  
subsection (g-1) of Section  
18.5 of the Illinois Condo-  
minium Property Act. Pur-  
suant to Local Court Rule  
11.03 (J) if there is a sur-  
plus following application  
of the proceeds of sale,  
then the plaintiff shall send  
written notice pursuant to  
735 ILCS 5/15-1512(d) to  
all parties to the proceed-  
ing advising them of the  
amount of the surplus and  
that the surplus will be held  
until a party obtains a court  
order for its distribution or,  
in the absence of an order,  
until the surplus is forfeited  
to the State.  
If the sale is set aside for  
any reason, the Purchaser  
at the sale shall be entitled  
only to a return of the de-  
posit paid. The Purchaser  
shall have no further re-  
course against the Mort-  
gagor, the Mortgagee or the  
Mortgagee's attorney.  
The property will not be  
open for inspection and  
Plaintiff makes no repre-  
sentation as to the condition  
of the property. Prospective  
bidders are admonished  
to check the Court file to  
verify all information. For  
information regarding this  
sale, interested parties may  
contact: Samuel G. Harrod  
IV at Meltzer, Purtill &  
Stelle LLC, 1515 E. Wood-  
field Road, Second Floor,  
Schaumburg, IL 60173  
telephone: (847) 330-2400.  
Dated: April 6, 2021  
Bill Prim  
Sheriff of McHenry  
County, Illinois  
Samuel G. Harrod IV  
(A.R.D.C. No. 06207021)  
MELTZER, PURTILL &  
STELLE LLC  
1515 E. Woodfield Road,  
Second Floor  
Schaumburg, Illinois  
60173  
(847) 330-2418  
sharrod@mps-law.com  
13167063  
(Published in the  
McHenry County News  
April 15, 22 & 29, 2021)  
393713

Rock Valley Publishing LLC

Can Publish Your Legals.

Call us at 815-877-4044 or email your legals to Legals@rvpublishing.com

380928



CREATIVE COMMONS PHOTO Rock Valley Publishing  
**Plants can outgrow their container and become rootbound. Lack of adequate soil and nutrients will cause deficiencies and decline in plant health.**

## Keep houseplants happy with simple solutions

BY UNIVERSITY OF ILLINOIS EXTENSION  
Keeping houseplants is a source of satisfaction for many, when plants are not thriving, it can be concerning and confusing. "As soon as a leaf yellows, or develops a brown spot, many run for a remedy," says University of Illinois Extension horticulture educator Sarah Vogel. "They may reach for fertilizer, or household pesticides, neither of which is an appropriate first response." Yellowing, brown edges, leaf spots, or drops are all symptoms something is ailing a plant and cultural, or environmental conditions are often the culprit. Knowing what to look for can alleviate houseplant woes. All species of plants have specific light, water and soil condition needs. This houseplant care guide from University of Missouri Extension, available at [go.illinois.edu/CaringForHouseplants](http://go.illinois.edu/CaringForHouseplants), outlines the basics of each. "Many plants go through an adjustment period whenever they are moved," Vogel says. "This can happen whether it's from the nursery to a home, the living room to a porch, or one window to another." This may cause yellowing, or leaf drop, but the plant will eventually acclimate if in favorable conditions. If the yellowing continues longer than a few weeks, place the plant in another spot and change its watering schedule slightly. Yellow leaves can also mean the plant is overwatered. A great way to decipher watering issues is to carefully remove the plant from its container and look at the roots. "With some exceptions, healthy plants generally have white roots," Vogel says. "If the roots are rusty orange to light brown, it is under-watered, and if the roots are dark brown to black, it is over-watered." Gently place the plant back in the container and adjust the watering schedule accordingly. If overwatering is the issue, withhold water until the soil is quite dry and gradually begin a new watering schedule. After two weeks, apply a water-soluble, houseplant-specific fertilizer. If no improvement is seen in the next two weeks, repot in fresh soil. Yellowing may also occur if a plant needs to be fertilized. Depending on what nutrient

is needed, yellowing may begin on the outer edges of leaves, or from the vein outward, or the leaf may even curl. Become familiar with the fertilization needs of each species. Occasionally, a plant needs fertilization when it becomes root-bound and may simply need to be repotted into a larger container. Leaf spots on foliage can be caused by too much sun. When spots appear consistently move the plant to a place it receives less sun. "Leggy, or stretching plants occur when they are reaching for more light," Vogel says. "Move them to a brighter location, or turn them occasionally to keep them growing evenly." Some fungal diseases may also cause leaf spots, so ensure proper circulation, remove and destroy infected plant parts, and allow soil to dry between waterings. Brown-edged leaves may indicate an erratic watering schedule or exposure to cold drafts. Another cause of brown leaf edges is an accumulation of fertilizer salts on containers. If other issues have been eliminated and the brown edges continue, scrub the edges of the pot and flush the soil with clear water. Most common insect pests on houseplants include scale, fungus gnats, aphids, spider mites, and mealybugs. If the plant is heavily infested with scale, it is best to discard it. Fungus gnats can be greatly reduced by letting the plant dry completely between waterings. Aphids can be controlled by washing away with water, or using insecticidal soap. Spider mites often affect already stressed plants, so keeping plants healthy is the most effective control measure. Horticultural oil or insecticidal soap may be used for spider mite infestations. Mealybugs can be wiped away with a cotton swab soaked in rubbing alcohol. When using pesticides, make sure they are labeled for indoor use and read and follow all label directions. If the problems persist, horticulture educators and Master Gardener volunteers are available to provide assistance at Illinois Extension offices around the state. Local offices can be located at [go.illinois.edu/ExtensionOffice](http://go.illinois.edu/ExtensionOffice).  
*Source: Sarah Vogel, Horticulture Educator, Illinois Extension.*

You ought to be in pictures!

THIS IS AN OPEN CALL FOR SUBMITTED PHOTOS TO BE USED IN YOUR COMMUNITY NEWSPAPER

▼ Community events, car washes, festivals, lemonade stands, school projects – people at work and at play.

We are interested!

▼ Show the community what your group has been doing!

▼ NO EXPERIENCE NEEDED!

▼ Just shoot and e-mail!

▼ We need you to ID everyone in the photo *first* and *last* names required

▼ Tell us what's happening in the photo

▼ Please do NOT crop your photos.

▼ Tell us who took the photo and we will give them a photo credit

This is your chance to promote your organization or special event!

E-mail your photos at the highest possible resolution to: [bdrnews@rvpublishing.com](mailto:bdrnews@rvpublishing.com) BY NOON ON FRIDAY

PHOTOS MAY ALSO APPEAR ON OUR WEB SITE, [rvpnews.com](http://rvpnews.com)

Remember to include the 5W's: Who, what, where, when and why!

380934



Call  
815.877.4044  
to place your ad

# Rock Valley Publishing Classifieds

AD DEADLINE:  
**Monday  
at Noon**

SERVING NORTHERN ILLINOIS AND SOUTHERN WISCONSIN

employment



for sale



rentals & real estate



automotive



services offered



## help wanted

## for sale



### Job Opportunity

### Superintendent of Business Administration

### Administration Department

The Superintendent of Business Administration is part of the administrative team and is responsible for managing the financial and administrative functions for the District. Responsibilities include accounts payable, cash receipts, general ledger, record keeping, banking/investment transactions including reconciliations, assist with budget preparation, external financial reporting, internal audit controls, and coordinates the annual audit. Supervises the Customer Service and Marketing functions. Oversees and coordinates the District's Information Technology (IT) resources through internal oversight and partnerships with third party IT providers. This position also serves in the capacity of the Executive Director in his/her extended absence.

This position requires, but is not limited to, an understanding of government fund accounting, a working knowledge of Park District code which includes Appropriation and Tax Levy Ordinances, as well as information systems, budgets, planning, and reporting systems.

Successful candidates will have a bachelor's degree from an accredited college or university with a bachelor's degree in Business Administration, Accounting, or Finance. A minimum of five (5) years full-time related experience and a minimum of three (3) years supervisory experience. Preferred candidate has related experience in the management of financial operations in field of parks and recreation, municipal government, school districts, or any equivalent combination of education, experience and/or training.

This is a salaried, exempt position that reports to the Executive Director. The starting salary range for this position is \$59,072-\$73,840 annually based on experience. This position includes an excellent benefits package.

Interested candidates should complete an online application along with a cover letter and resume on our website at [www.belviderepark.org](http://www.belviderepark.org) by **April 30, 2021**.

**Job ID 480**

**An Equal Opportunity Employer**

393696

*We are  
hiring*

**ONGOING**  
SOCIAL DISTANCING  
PRACTICES IN PLACE

## ALL SHIFTS

**MUST BE  
16 YEARS OLD**

Equal Opportunity Employer  
M/F/D/V/H

**50+**  
*Immediate*

**100+**  
*Summer*  
**POSITIONS**  
AVAILABLE

*Apply  
Today!*

Now Conducting  
**PHONE INTERVIEWS!**  
Monday - Friday

8am-4:30pm

**800-487-9477**

**\$14**  
PER HOUR

**Colony**  
BRANDS, INC.  
& Affiliates  
Monroe, WI

**TEXT** ColonyJobs or  
to 97211 VISIT  
**ColonyBrands.com**

### Announcements

**CLASSIFIED IN-COLUMN ADS** cannot be credited or refunded after the ad has been placed. Ads canceled before deadline will be removed from the paper as a service to our customers, but no credit or refund will be issued to your account.

**DISCLAIMER NOTICE** This publication does not knowingly accept fraudulent or deceptive advertising. Readers are cautioned to thoroughly investigate all ads, especially those asking for money in advance.

### Lawn & Garden

**FOR SALE: WATERFORD** Like new 2019 Cub Cadet Riding Lawn Mower. Model # CC304. Call and leave number for appointment. 262-514-3756.

### Wanted to Buy

**RETIRED MAN WOULD** like to have a similar bike he had in 1983. Harley Davidson Shovelhead 1975 to 1984. Low Rider or Superglide. Running or not & parts okay. Call 608-558-7612 or 608-934-5562.

## garage sale

### Winn-Pec Garage Sales

**8189 KELLEY RD./WINNEBAGO ESTATE SALE.** Fri. April 16, 9am-5:00 Sat. April 17, 9am-noon. Mask required please. Hand tools, electric saws, drill press, routers, belt sander, hand Sanders, work benches, bench grinders, air compressor, Antique commercial balance scale, Storage boxes, empty fair tack boxes, assorted nails, nuts, screws, Large and Dorm refrigerators, wooden kitchen table & 6 chairs, glassware, service for 12 china, cooking utensils, 4 bar stools, decorations, crafts, 2 metal wardrobes. Vintage hat collection and rack, Antique brick brack, advertisement cans, exercise machine & treadmill. One metal shed to be removed. **Civil War reproduction uniforms and gear, big selection.**

**Rural & Farm Properties**

- Small & Large Acre Farms
- Prime Hunting Land
- Horse Farms
- Lake & Vacation Properties

for more details on placing an ad in our  
**REAL ESTATE SECTION**  
**Call 815-877-4044**

### Prairie View Assisted Living

located in Winnebago is seeking the following:

- **Caregivers** - 2nd shift, full-time and part-time. Flexible scheduling available. Small, friendly, homelike setting. Salary based on experience.

**SIGN-ON BONUS!**

Contact Tammy Bargman, Executive Director at 815-335-1800 or fax resume to 815-335-7136 • 500 E. McNair • Winnebago, IL

**FIND YOUR NEXT JOB  
IN THE CLASSIFIEDS**

### Part-Time Advertising Sales Representative

We are currently seeking a Part-Time Advertising Sales Representative to serve new and current clients in our Belvidere market. If you like a fast-paced environment and enjoy a challenge, this is the opportunity for you!

**For immediate consideration  
send resume /job history to:**

Vicki Vanderwerff, Director of Advertising  
Email: [vicki@southernlakesnewspapers.com](mailto:vicki@southernlakesnewspapers.com)  
Fax: (262) 725-6844

**ROCK VALLEY**  
Publishing LLC

392954

## real estate

**PUBLISHER'S NOTICE** All real estate advertising in this newspaper is subject to the Fair Housing Act which makes it illegal to advertise any preference, limitation or discrimination based on race, color, religion, sex, disability, familial/ status or national origin, or an intention to make any such preference, limitation or discrimination. Familial status includes children under the age of 18 living with parents or legal custodians, pregnant women and people securing custody of children under 18. This newspaper will not knowingly accept any advertising for real estate which is in violation of the law. Our readers are hereby informed that all dwellings advertised in this newspaper are available on an equal opportunity basis. To complain of discrimination call HUD toll-free at 1-900-669-9777. The toll-free tele phone number for the hearing impaired is 1-800-927-9275. EQUAL HOUSING OPPORTUNITY

### ADVERTISING SALES EXECUTIVE

**Rock Valley Publishing**, your hometown newspapers serving the stateline has an opening for an experienced Media Sales Representative to call on current and new accounts in a protected sales territory.

Growing area with many new businesses, this is a great opportunity for the right applicant.

We publish newspapers, shoppers and niche publications throughout the stateline. You have the opportunity to sell into all Rock Valley Publishing. L.L.C. publications, making your paycheck much larger!

**For immediate consideration send resume/job history to:**

Vicki Vanderwerff, Director of Advertising  
Email: [vicki@southernlakesnewspapers.com](mailto:vicki@southernlakesnewspapers.com)  
Fax: (262) 725-6844

392953

## business & service

### Farm Market

**TOP PRICES PAID**  
For your lame & injured cattle  
Call Collect 815-871-2697

### Water Softeners

**H2O Express**  
WATER TREATMENT  
SOLUTIONS

**SPECIAL**  
*Broken water softener?*  
**\$10.95 + parts**

• All makes & models •  
**815-505-8848**  
**815-544-5376**

**IT'S GARAGE SALE  
TIME AGAIN!**



14

ROCK VALLEY PUBLISHING

Thursday, April 15, 2021

Call  
815.877.4044  
to place your ad

Rock Valley Publishing

Classifieds

AD DEADLINE:  
Monday  
at Noon

SERVING NORTHERN ILLINOIS AND SOUTHERN WISCONSIN

employment

for sale

rentals & real estate

automotive

services offered

for rent

Apartment

Apartment

Apartment

Apartment

Apartment

for rent

Apartment

Apartment

Apartment

Apartment

Apartment

Elm Place Apartments

Find comfort in your newly renovated apartment!

Now taking applications for 1 and 2 bedroom apartments.

Range, refrigerator, A/C unit, on-site laundry and off-street parking "all included."

30% of your income with rental assistance!

Call today for an application!  
815-288-1912 or 815-440-2769  
406-412 Elm Street, Durand, IL 61024

Professionally managed by BAYWEST RESIDENTIAL, LLC.

This institution is an equal opportunity provider.

Call

815-877-4044

to place your classified ads

DEADLINE IS NOON ON MONDAY

Rock Valley Publishing LLC

388540

388032

transportation

Automobiles

2007 MERCEDES BENZ R350 134,000 mi., new tires & battery, clean, runs good. \$7,500 OBO Stephanie 815-319-0555

2008 SATURN AURA 136,000 mi., very clean. Gramma's car. \$5,500 262-857-2939

2010 FORD FLEX 117K, excellent condition, all options, elderly owned. \$8,900. 773-401-0208.

Automobiles Wanted

TOP DOLLAR FOR YOUR FULL SIZE JUNK TRUCKS & SUV's. Haul away 7 days a week. 262-758-1807

Boats

1996 PRO CRAFT V180 COMBO W/TRAILER 18ft. fiberglass boat. 150hp Mariner, 10" depth finder w/side imaging, 60lb thrust. 24 volt autopilot trolling motor, 2 live wells, great shape, some scratches in fiberglass. \$6,500 OBO. 815-979-0793.

Campers and RVs

2019 JAYCO CAMPER Excellent condition. All specs can be found online google, 2019 Jay Flight 32BHDS. \$28,500. Text 262-210-4908.

2020 COACHMAN CATALINA Legacy Edition 30 footer. Used once, excellent cond. \$22,000 OBO Call or text 414-791-1277

Village Green Apartments Pecatonica 2

1039 Washington St. Pecatonica, IL

Immediate openings for 1 bedroom apartment homes. Must be 62 years of age or older; disabled regardless of age. Included in rent; water, sewer and trash. All units have washer-dryer, stove, refrigerator & a/c units. Family pet welcome with a deposit.

Interested parties, please contact: 815-234-2620

Contact us today to receive an application for your new home. Professionally Managed by CMS Management Company

An equal opportunity provider.

Village Green Apartments Pecatonica 1

1039 Washington St. Pecatonica, IL

Immediate openings for 1 bedroom apartment homes. Must be 62 years of age or older; disabled regardless of age. Included in rent; water, sewer and trash. All units have washer-dryer, stove, refrigerator & a/c units. Family pet welcome with a deposit.

Interested parties, please contact: 815-234-2620

Contact us today to receive an application for your new home. Professionally Managed by CMS Management Company

An equal opportunity provider.

FOR SALE

FIND YOUR NEXT HOME IN THE CLASSIFIEDS

# Alcohol consumption a growing health concern during pandemic

An increase in alcohol consumption to manage stress during the COVID-19 pandemic is also increasing people's risk of oral health problems associated with alcohol.

Several national studies show an increase in alcohol consumption over the past year. In one study, 60 percent of adults reported an increase in drinking during the pandemic, and 46 percent cited stress as the reason.

"Alcohol consumption, when not done in moderation, can lead to a number of oral health problems," said Dr. Sheila Strock, vice president, dental services and science officer at Delta Dental of Illinois. "It can increase your risk of gum disease, tooth decay, mouth sores and even oral cancer."

**Connection between alcohol and oral cancer**

April is both Alcohol Awareness Month and Oral Cancer Awareness Month. The two have a distinct connection.

Alcohol abuse is the second-highest risk factor for developing oral cancer, according to the Oral Cancer Foundation. About 75 to 80 percent of Illinoisans with oral cancer drink alcohol.

When heavy drinking is combined with smoking, a person has 30 times greater risk of developing oral cancer. The Centers for Disease Control and Prevention defines heavy drinking as eight or more drinks a week for women, and 15 or more for men.

**Reducing the risk**

An estimated 2120 Illinoisans will be diagnosed with new cases of mouth and throat cancer this year – a 4 percent increase over last year, according to the American Cancer Society.

Men are especially susceptible. Oral cancer remains one of the top 10 types of cancer among men. The likelihood of oral cancer also increases with age – it is most often diagnosed among people over 55. Aside from alcohol and tobacco, other risk factors associated with oral cancer include sun exposure and human papillomavirus (HPV) infections.

Prevention is the best medicine. Reduce your risk of oral cancer by:

- Visiting the dentist regularly. Dentists can detect signs of more than 120 diseases that have symptoms appearing in the mouth, including oral cancer.
- Limiting alcohol consumption.
- Abstaining from smoking marijuana and all forms of tobacco including chewing, vaping and smoking cigarettes.

- Getting an HPV vaccine.
- Applying lip balm with at least SPF 30.

Self-exams can also help. Symptoms to look for include a sore or lump in the mouth, lip, or throat; a red or white patch in the mouth; or a feeling that something is caught in your throat. You may also experience difficulty chewing, swallowing or moving the jaw or tongue; numbness in the mouth; swelling of the jaw or ear pain.

**Healthier ways to manage stress**

Having a drink, while enjoyable on occasion, isn't the best way to alleviate stress. Healthier choices include:

- Exercising of any kind, whether it's a low-impact outdoor walk or a high-impact sports activity or fitness class.
- Eating healthy, well-balanced meals that include lean protein, dairy and fresh fruits and vegetables.
- Getting enough sleep so your body can recharge.

Staying connected with friends and family, even if it's through video chats or phone calls.

For additional tips on protecting your oral health, visit [deltadentalil.com/oral-health](http://deltadentalil.com/oral-health).

Belvidere REPUBLICAN

★ Local News

★ School Sports

★ Local Events

★ Local Advertisers

(support your local businesses)

★ Legals & Auctions

1 Year (52 issues) for \$31.95

In Boone County

Please check to subscribe to the:

☐ Belvidere Republican

Please Print:

Date

Name

Address P.O. Box Apt.

City, State, Zip

Phone Email

☐ New ☐ Renewal Subscription paid \$

☐ Check Enclosed ☐ Credit Card ☐ Electronic Check

(Make checks payable to Rock Valley Publishing)

CREDIT CARD

Credit Card Number CID

Name on card Expires

Billing address (if different from above)

ELECTRONIC CHECK

ACH-routing Acct. #

Mail form along with payment to: Belvidere Republican,  
130 S. State St., Suite 101, Belvidere, IL 61008

Or call to subscribe: 815-547-0084

392675

The Wheel Deal



Place your car, truck, motorcycle, boat or RV for one price and it runs for up to 16 weeks.

\$19<sup>95</sup>

1<sup>st</sup> three lines

Extra lines are \$1.95 each

17 papers

Starts for 4 weeks and if not sold you call us and we will renew at no additional charge!

(Maximum run 16 weeks total)

PRIVATE PARTY ONLY.

Ad must be prepaid. Deadlines vary

Call 815-877-4044

332806



By Jim Nowlan  
CONTRIBUTOR

I was a state agency director on three occasions back in the day, yet I don’t think I could navigate the maze of dozens of separate, and scattered, state and local social service agencies that have sprung up over the decades to address people’s problems. It’s time for a major reset, to simplify and to provide people in distress with “coaches” who can help navigate the maze.

Cases in point: In the mid-1990s, in the wake of Newt Gingrich’s national welfare reform, I volunteered to assist a social worker friend of mine who had been assigned 13 single mothers. This baker’s dozen had to work or go to school in order to keep their welfare benefits.

But lack of jobs was far from the mothers’ sole problem. These young ladies were each walking bundles of bad decisions and liabilities/disabilities: Kids born out of wedlock; school dropouts; drugs; minor rap sheets; mental distress and illness; hanging around with the wrong sorts, and more.

The young women really did want to climb out of their predicaments. Social worker Judy Leonardelli (now deceased) was a big woman, had been a bouncer at a late-night lounge in my home area early in her life. She was tough, and caring.

Judy assigned me tasks like

getting a minor infraction expunged so a young lady could get a low-paying job at a nursing home. The young women typically needed services across DCFS, mental health, child care, housing, welfare, and more. I found nine state social service agencies in Peoria (where we did our thing), all scattered around the city’s metro area. But most of these women lacked wheels.

One young woman told me she got up at 4 each morning, to get youngster(s) up and going and fed something; catch various buses for them and her to school and to the community college (where Judy met the women), to work, etc. She made it home each day, by a couple/three buses, after picking up the kids, by about 7 or 8 p.m.

Judy was their coach, prod, advocate. She was good. Judy estimated that if 4 of the 13 made it to stable lives, she would consider her work successful.

Case two: A friend of mine in a small central Illinois city recently saw a woebegone, 40-ish woman looking into his store window. My friend inquired of her. He learned she was staying at the local domestic abuse shelter (a very good operation), but her time limit there was ticking; she was freaking out.

Earlier, Kate (obviously not her real name) had escaped an abusive relationship with a drug dealer in a distant

city. He was now apparently cashing her stimulus checks, so she had no money. Kate applied for jobs, but couldn’t pass the drug tests (saying she needed cannabis to calm her).

Kate has mental problems as well, for which a doctor prescribed medications. But when she went to fill same, the pharmacy told her the doc was not in their network, so she needed a significant co-pay, which of course she didn’t have.

When I was a legislator more than half a century ago, Illinois’ huge, Dickensian mental health and “state

school” warehouses were thankfully closed. (I visited them; my characterization is too kind). There was a pledge that the foreboding institutions would be replaced with community-based services. Unfortunately, the local services never came, at least not with adequacy.

Over the decades, however, a patchwork quilt of programs, each with its own physical service location, it seems, has developed. There are dozens of them. (Don’t believe me? Google social service agencies, or go to the State of Illinois website.) The

intent is good; the fragmentation is not, and given bureaucratic turf defenses, it is not likely there will be much true consolidation.

There are many caring, capable staff at a panoply of agencies, all willing to do their respective pieces to help Kate. Yet none of them, like the pharmacy, deal with Kate’s whole bundle of problems. And so, she falls through the cracks.

People in real distress, with their multiple problems, each need a coach/prod/advocate like Judy Leonardelli. The coach would run interference

through the maze, help knit the services together, maybe staving off homelessness, which Kate faces.

Our state legislators should stand back and re-evaluate our crazy quilt of state, local and nonprofit social service delivery systems. We can do better.

For many years, Jim Nowlan was a senior fellow and political science professor at the University of Illinois in Urbana-Champaign. He was a state representative, worked for three governors and publishes a weekly newspaper in central Illinois.

## REAL ESTATE LEGAL NOTICES

IN THE CIRCUIT COURT OF THE 22ND JUDICIAL CIRCUIT MCHENRY COUNTY - WOODSTOCK, ILLINOIS DEUTSCHE BANK NATIONAL TRUST COMPANY AS TRUSTEE FOR ARGENT SECURITIES INC.; ASSET BACKED PASS THROUGH CERTIFICATES SERIES 2006-W1;

Plaintiff,  
vs.  
FREDOLIN G. MENESES; RUTH ALMA MENESES; BOULDER RIDGE FAIRWAY HOMES PROPERTY OWNERS' ASSOCIATION; BOULDER RIDGE GREENS PROPERTY OWENRS' ASSOCIATION; BOULDER RIDGE PROPERTY OWNERS' ASSOCIATION; BOULDER RIDGE PROPERTY OWNERS' ASSOCIATION FKA BOULDER RIDGE COUNTRY CLUB PROPERTY OWNERS' ASSOCIATION; FAIRWAY HOMES ASSOCIATION; HOUSEHOLD FINANCE CORPORATION III; UNKNOWN OWNERS AND NONRECORD CLAIMANTS;

Defendants,  
18 CH 821  
NOTICE OF SALE  
PUBLIC NOTICE IS HEREBY GIVEN that pursuant to a Judgment of Foreclosure and Sale entered in the above entitled cause Intercounty Judicial Sales Corporation will on Thursday, May 6, 2021 at the hour of 10:30 a.m. in the conference room, 970 McHenry Avenue, Crystal Lake, Illinois 60014, sell at public auction to the highest bidder for cash, as set forth below, the following described mortgaged real estate:

P.I.N. 19-19-303-026.  
Commonly known as 10 Laurel Valley Court, Lake in the Hills, IL 60156.

The mortgaged real estate is improved with a single family residence. If the subject mortgaged real estate is a unit of a common interest community, the purchaser of the unit other than a mortgagee shall pay the assessments required by subsection (g-1) of Section 18.5 of the Condominium Property Act.

Sale terms: 10% down by certified funds, balance, by certified funds, within 24 hours. No refunds. The property will NOT be open for inspection. Prospective bidders are admonished to check the court file to verify all information.

For information call Law Clerk at Plaintiff's Attorney, The Wirbicki Law Group, 33 West Monroe Street, Chicago, Illinois 60603. (312) 360-9455. W18-1913 INTERCOUNTY JUDICIAL SALES CORPORATION intercountyjudicialsales.com I3166208

(Published in the McHenry County News April 1, 8 & 15, 2021)  
392703

IN THE CIRCUIT COURT OF THE 22ND JUDICIAL CIRCUIT MCHENRY COUNTY - WOODSTOCK, ILLINOIS WELLS FARGO BANK, N.A.; Plaintiff,  
vs.  
UNKNOWN HEIRS AND LEGATEES OF RICHARD L.

PERRY AKA RICHARD PERRY, DECEASED; CITY OF HARVARD; UNKNOWN OWNERS AND NON RECORD CLAIMANTS; STEVE PERRY; JOEL KNOSHER, AS SPECIAL REPRESENTATIVE FOR RICHARD L. PERRY AKA RICHARD PERRY, DECEASED;

Defendants,  
19 CH 585  
NOTICE OF SALE  
PUBLIC NOTICE IS HEREBY GIVEN that pursuant to a Judgment of Foreclosure and Sale entered in the above entitled cause Intercounty Judicial Sales Corporation will on Thursday, May 13, 2021 at the hour of 10:30 a.m. in the conference room, 970 McHenry Avenue, Crystal Lake, Illinois 60014, sell at public auction to the highest bidder for cash, as set forth below, the following described mortgaged real estate:

P.I.N. 01-35-477-003.

Commonly known as 109 North Hart Street, Harvard, IL 60033.

The mortgaged real estate is improved with a single family residence. If the subject mortgaged real estate is a unit of a common interest community, the purchaser of the unit other than a mortgagee shall pay the assessments required by subsection (g-1) of Section 18.5 of the Condominium Property Act.

Sale terms: 10% down by certified funds, balance, by certified funds, within 24 hours. No refunds. The property will NOT be open for inspection. Prospective bidders are admonished to check the court file to verify all information.

For information call Sales Department at Plaintiff's Attorney, Manley Deas Kochalski, LLC, One East Wacker Drive, Chicago, Illinois 60601. (614) 220-5611. 19-033807 INTERCOUNTY JUDICIAL SALES CORPORATION intercountyjudicialsales.com I3166645

(Published in the McHenry County News April 8, 15 & 22, 2021)  
393201

IN THE CIRCUIT COURT OF THE 17TH JUDICIAL CIRCUIT COUNTY OF BOONE - BELVIDERE, ILLINOIS PNC BANK, NATIONAL ASSOCIATION;

Plaintiff,  
vs.  
UNKNOWN HEIRS AND LEGATEES OF BARBARA A. BLAND AKA BARBARA BLAND AKA BARBARA ANN BLAND; KATHERINE KIRANE AKA KATHY KIRANE; KENNETH ZENTNER AKA KENNETH L. ZENTNER; DONALD BLAND AKA DONALD BLAND JR. AKA DONALD L. BLAND; TIMOTHY A. MILLER AS SPECIAL REPRESENTATIVE FOR BARBARA A. BLAND; UNKNOWN OWNERS AND NON RECORD CLAIMANTS;

Defendants,  
20 CH 60  
NOTICE OF SALE  
PUBLIC NOTICE is hereby given that pursuant to a Judgment of Foreclosure entered in the above entitled cause Intercounty Judicial Sales Corporation will on Thurs-

day, May 13, 2021, at the hour of 12:15 p.m. in the office of inside the front entrance of the, Boone County Courthouse, 601 North Main Street,, Belvidere, Illinois 61008, sell to the highest bidder for cash, the following described mortgaged real estate:

P.I.N. 05-25-381-006.

Commonly known as 511 Julien Street, Belvidere, Illinois 61008.

The improvement on the property consists of a single family residence. If the subject mortgaged real estate is a unit of a common interest community, the purchaser of the unit other than a mortgagee shall pay the assessments required by subsection (g-1) of Section 18.5 of the Condominium Property Act.

Sale terms: 10% down by certified funds, balance within 24 hours, by certified funds. No refunds. The property will NOT be open for inspection.

For information call The Sales Department at Plaintiff's Attorney, Anselmo Lindberg & Associates, LLC, 1771 West Diehl Road, Naperville, Illinois 60563-1890. (630) 453-6960. File Number F20080019 INTERCOUNTY JUDICIAL SALES CORPORATION intercountyjudicialsales.com I3166648

(Published in the Belvidere Republican April 8, 15 & 22, 2021)  
393194

IN THE CIRCUIT COURT OF THE TWENTY SECOND JUDICIAL CIRCUIT MCHENRY COUNTY, ILLINOIS MCHENRY SAVINGS BANK,

Plaintiff,  
v.  
GRAND PRIX, INC., MICHAEL J. FLEMING, and HOME STATE BANK as Trustee On Behalf Of Trust Agreement Dated October 1, 1997, Known As Trust Number 4599, UNKNOWN OWNERS and NON-RECORD CLAIMANTS,

Defendants.  
20 CH 000229  
Property Address: 4002 Main Street, McHenry, Illinois 60050

NOTICE OF SHERIFF'S FORECLOSURE SALE  
PUBLIC NOTICE is hereby given that pursuant to a Judgment of Foreclosure and Sale entered in the above-entitled cause on February 24, 2021, Bill Prim, the Sheriff of McHenry County, Illinois, or his deputy, will on Thursday, May 20, 2021, at the hour of 10:00 a.m., at the McHenry County Government Center, 2200 N. Seminary Avenue, Room 262, Woodstock, IL 60098, sell at public auction to the highest and best bidder(s) for cash, the following described real estate:

Commonly Known as: 4002 Main Street, McHenry, Illinois PIN: 09-26-354-032  
The total Judgment on the property is: \$122,483.15.

The property consists of a commercial building.

Terms of Sale: Ten percent (10%) due by cash or certified funds at the time of sale and the balance is due within 24 hours of the sale; plus, for residential real estate, a statutory judicial sale fee calculated at the rate of \$1.00 for each \$1,000 or fraction thereof of

the amount paid by the purchaser to the person conducting the sale, not to exceed \$300.00, for deposit into the Abandoned Residential Property Municipality Relief Fund. No judicial sale fee shall be paid by the mortgagee acquiring the residential real estate pursuant to its credit bid at the sale or by any mortgagee, judgment creditor, or other lienor acquiring the residential real estate whose rights in and to the residential real estate arose prior to the sale. All payments shall be made in cash or certified funds payable to the Sheriff of McHenry County. The subject property is subject to real estate taxes, special assessments or special taxes levied against said real estate and is offered for sale without any representation as to quality of title and without recourse to Plaintiff and in "As Is" condition. The sale is further subject to confirmation by the court.

In the event the property is a condominium, in accordance with 735 ILCS 5/15-1507(c)(l)(H-I) and (H-2), 765 ILCS 605/9(g)(5), and 765 ILCS 605/18.5(g-l), you are hereby notified that the purchaser of the unit, other than a mortgagee, shall pay the assessments and legal fees required by subdivisions (g)(l) and (g)(4) of Section 9 and the assessments required by subsection (g-1) of Section 18.5 of the Illinois Condominium Property Act. Pursuant to Local Court Rule 11.03 (J) if there is a surplus following application of the proceeds of sale, then the plaintiff shall send written notice pursuant to 735 ILCS 5/15-1512(d) to all parties to the proceeding advising them of the amount of the surplus and that the surplus will be held until a party obtains a court order for its distribution or, in the absence of an order, until the surplus is forfeited to the State.

If the sale is set aside for any reason, the Purchaser at the sale shall be entitled only to a return of the deposit paid. The Purchaser shall have no further recourse against the Mortgagor, the Mortgagee or the Mortgagee's attorney.

The property will not be open for inspection and Plaintiff makes no representation as to the condition of the property. Prospective bidders are admonished to check the Court file to verify all information. For information regarding this sale, interested parties may contact: Samuel G. Harrod IV at Meltzer, Purtill & Stelle LLC, 1515 E. Woodfield Road, Second Floor, Schaumburg, IL 60173 telephone: (847) 330-2400.

Dated: April 6, 2021  
Bill Prim  
Sheriff of McHenry County, Illinois  
Samuel G. Harrod IV (A.R.D.C. No. 06207021)  
MELTZER, PURTILL & STELLE LLC  
1515 E. Woodfield Road, Second Floor  
Schaumburg, Illinois 60173  
(847) 330-2418  
sharrod@mplaw.com  
I3167063

(Published in the McHenry County News April 15, 22 & 29, 2021)  
393712

## April is Safe Digging Month

To help keep springtime outdoor projects running smoothly and safely, Nicor Gas is reminding the community during April, Safe Digging Month, that do-it-yourself homeowners and professional excavators alike are required by law to call 811 before digging on any property.

“We put safety first as we provide our customers with the comforts of natural gas, but we can’t do it alone,” said Emeka Igwilu, chief data officer and vice president of Operations Support at Nicor Gas.

“By identifying the location of the underground infrastructure in your area before starting a new project, you can do your part to stay safe and protect our state.”

Even simple projects such as gardening and landscaping can be dangerous and disruptive when digging with utility cables and pipes underground. Nicor Gas emphasizes the importance of contacting 811 to have underground infrastructure located before the start of any digging project.

This includes fence installation, driveway or sidewalk paving, building a home addition or installing a pool. The requirement to call 811 also applies before clearing a sewer line, tunneling, grading, boring, blasting or similar work.

Nicor Gas owns, operates, designs and maintains more than 34,000 miles of natural gas infrastructure throughout northern Illinois. In addition to those lines, there are underground communications cables, electric, water and sewer lines and other utility lines on every property. Knowing where underground infrastructure is before putting a shovel in the dirt helps prevent injuries, property damage and inconvenient service outages.

To help ensure communities stay safe and connected, Nicor Gas offers the following safe digging guidelines:

### Contact or click 811 before you dig

When starting an outdoor digging project, contact 811 or visit JULIE, Illinois’ one-call center at illinois1call.com at least three business days in advance to request that locating experts mark underground utility lines. Requests are free and can be made 24 hours a day, seven days a week.

### Allow the required time for marking

After contacting 811, wait to have underground utility lines marked before starting to dig. The approximate location of underground utility lines will be marked with color-coded spray paint, flags or stakes that correspond to the utility. The color used for natural gas is yellow.

### Respect the marks

Only use handheld digging tools to uncover the area carefully around a utility line when you need to dig close by.

### Excavate carefully

Make sure the marks remain visible during the project. If they are damaged or removed, customers are encouraged to contact 811 to have lines remarked. If a natural gas line is damaged accidentally or the distinctive rotten-egg odor associated with natural gas is present, call 911 or the Nicor Gas 24-hour emergency phone line at 888.Nicor4U (888.642.6748) from a safe location. Do not operate any machinery or equipment that might cause a spark or create an open flame.

The company also provides a fun, interactive way for parents and their children to learn about natural gas safety with its digital Safe Digging Arcade. The arcade uses science, engineering, technology and math puzzles and games to educate children about how their families can stay safe and avoid damaging a utility line when digging around their homes.



# GUN & MILITARY AUCTION

## April 17, 2021

PREVIEW FRIDAY, NOON TO 8 P.M.

LIVE AUCTION & ONLINE BIDDING

AUCTION TO INCLUDE:

100+ LOTS OF AMMO

100+ LOTS OF MILITARY RELICS



**HUNTING**



**100+ PISTOLS**



**MATCHING  
SERIAL NUMBERS**



**GREAT SELECTION  
OF WWII WEAPONS**



## HUNDREDS OF GUNS, ONE GREAT AUCTION!



**WWII PISTOLS &  
LONG GUNS**



**30 BLACK GUNS**



Online catalog available at [DonleyAuctions.com](http://DonleyAuctions.com)

**Donley  
AUCTIONS**

8512 S. UNION RD.  
UNION, IL 60180

**815-923-7000**

**AuctionZip**

live **auctioneers**

**proxibid**

ALWAYS LOOKING FOR QUALITY  
CONSIGNMENTS! ONE PIECE  
OR ENTIRE COLLECTIONS!!

CALL RANDY DONLEY  
815.790.9435